



Transducer

Screenshot of the operating software

Top-side unit

► Performance

- water depth range: 0.5 – 500 m
- penetration: up to 50 m, depending on sediments
- layer resolution: up to 5 cm
- motion compensation: heave, roll
- beam width @ 3 dB:  $\pm 2^\circ$  / footprint < 7 % of water depth for all frequencies

► Transmitter

- primary frequencies: approx. 100 kHz (band 85 – 115 kHz)
- secondary low frequencies: 4, 5, 6, 8, 10, 12, 15 kHz (band 2 – 22 kHz)
- primary source level: > 240 dB/ $\mu$ Pa re 1 m
- pulse width: 0.07 – 1.3 ms
- pulse rate: up to 60/s
- multi-ping mode
- pulse type: CW, Ricker, LFM (chirp)

► Acquisition

- primary frequency (echo sounder, bottom track)
- secondary low frequency (sub-bottom data, multi-frequency mode)
- sample rate 96 kHz @ 24 bit

► System Components

- transceiver unit 19 inch / 9 U (WHD: 0.52 m x 0.44 m x 0.40 m; 39 kg)
- transducer incl. 30 m cable (WHD: 0.34 m x 0.08 m x 0.26 m; 30 kg)
- system control: internal PC

# SES-2000 standard Parametric Sub-bottom Profiler

► Software

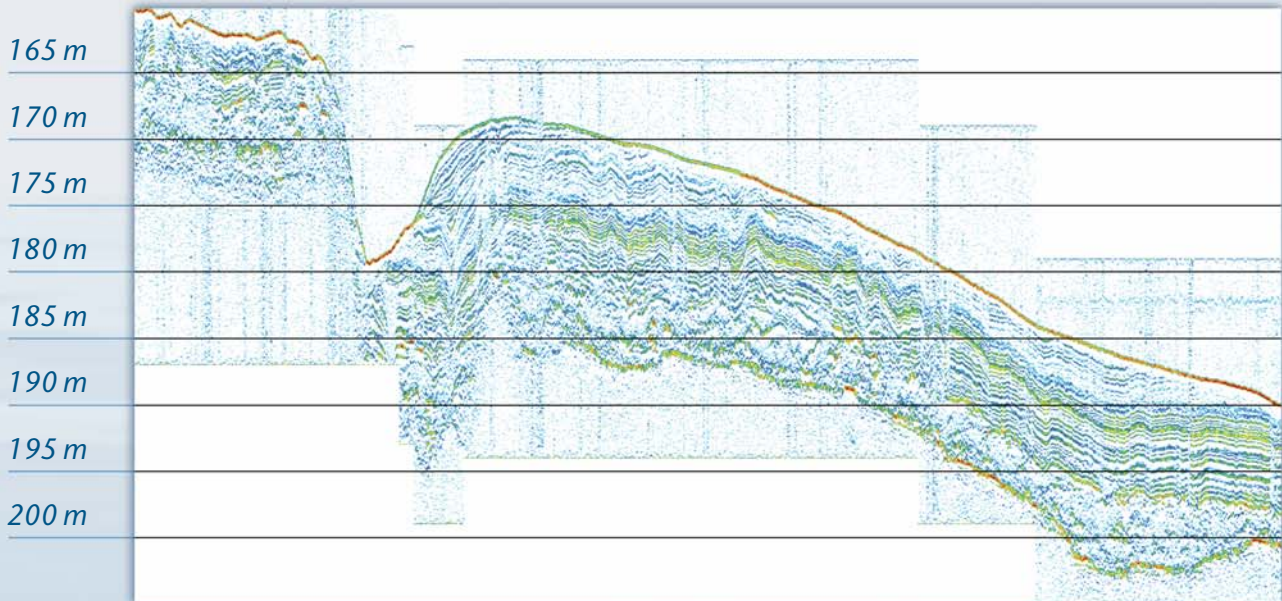
- SESWIN data acquisition software
- SES Convert SEG-Y/XTF data export
- SES NetView remote display
- ISE post-processing software

► Power Supply Requirements

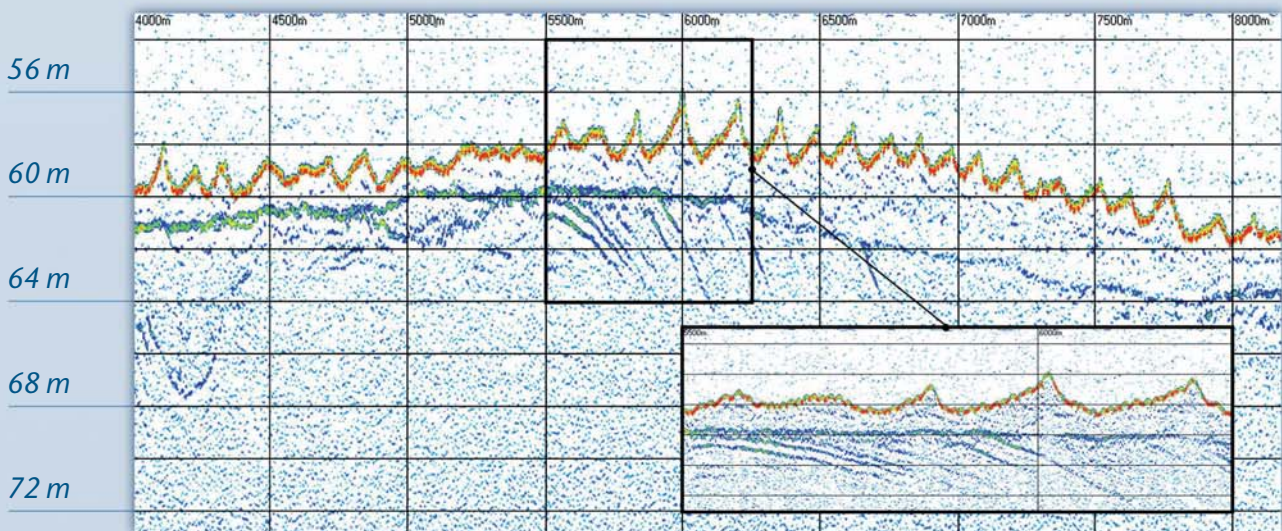
- 100 – 240 V AC / 50 – 60 Hz
- power consumption: < 350 W



# Survey examples of SES-2000 standard



*Baltic Sea echo plot example – Frequency 8 kHz, pulse length 375  $\mu$ s, profile length 6200 m*



*Northern Sea echo plot example (detail) – Frequency 8 kHz, pulse length 375  $\mu$ s, profile length 4200 m*

**Innomar Technologie GmbH**

Schutower Ringstraße 4  
D-18069 Rostock  
**Phone (Fax) +49 381 44079-0 (-299)**  
**E-Mail** [info@innomar.com](mailto:info@innomar.com)



[www.innomar.com](http://www.innomar.com)