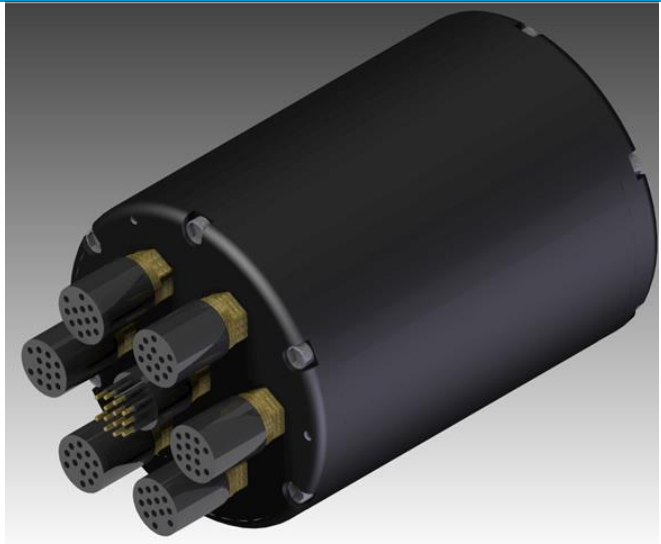


Q-HUB IP™

Underwater IP 6 port hub for hi speed Ethernet with integrated power switching



The OTAQ Q-HUB IP is a 6 channel underwater ethernet switch with on board power switching system. It allows you to access the wasted capacity in your Gigabyte (GBE) and 10/100 Ethernet channels.

The Q-HUB IP is a 10/100/1000Mbps ethernet switch capable of connecting up to six 10/100/1000 devices to a single GBE or 10/100 channel. Power switching to the six channels is controlled from embedded GUI software accessed over the ethernet connection.

Q-HUB IP is perfect for ROVs to enable the use of additional ethernet devices and its compact size enables mounting to variety of vehicles or monitoring platforms, landers and towed systems. It is available in 300m (lightweight Acetal) or 3000m (anodised aluminium) depth ratings.

The OTAQ Q-HUB IP is an ideal partner to the OTAQ™ range of IP underwater cameras.

Suitable Applications

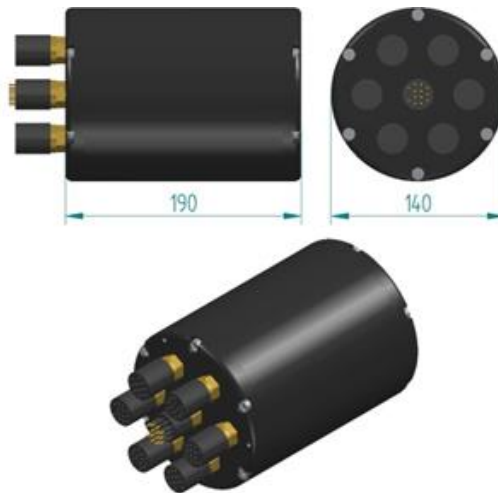
- Commercial ROVs and AUVs of all sizes
- Monitoring platforms
- Landers
- Marine renewables inspection
- Touchdown monitoring
- Oceanographic research

Q-HUB IP™

Underwater IP 6 port hub for hi speed Ethernet with integrated power switching



Q-HUB IP 6 Channel Switch 6



All dimensions in mm

	Q HUB IP 6CH
Model	4000M AA
Material	Hard Anodised Aluminium
Depth rating	4000m
Weight (in air)	6kg
Weight (in water)	3kg
Data	10/100/1000 Mbps Ethernet
Power	18-30VDC
10/100/1000 Out connector	1 x BH13M
10/100/1000 In connector	6 x BH13F
Part no	

OTAQ Offshore

Aberdeen Innovation Park
Campus Two
Bridge of Don
Aberdeen
AB22 8GU

Phone +44 (0)1224 673301
offshore@otaq.com

offshore.otaq.com