

The K D7 logger is an extremely versatile display and logging module suitable for a range of applications across industry. Based on an ARM high speed 32bit processor running Windows CE the unit is not only a data logger but a real time visualisation HMI . The D7 has multiple inputs and outputs, complex internal control and maths functions as well as PC communications allowing the unit to act as alarm and trip system in standalone supervisory monitoring applications.

Typical Applications

- Crane lift record
- Winch load records
- Deployment Records
- Subsea equipment monitoring
- Standalone supervisory Alarms and annunciation

Capabilities

- Multiple Displays
- Live Trending
- Data logging
- Alarms and Relay trips
- Removable Media
- PC connection
- Data format for use with Excel



Product Report

Input and output formats

Analogue 4-20mA or 0-10VDC
Serial RS232, RS422, RS485
Temperature & Humidity sensors
Discrete inputs
Relay trips
Logic Pulse
Modbus RTU (Master or Slave)

Display Function

Multiple scrollable pages
Multi Point parameter per Display
Analogue display representation (Analogue meter)
Analogue display representation (Digital meter)
Bar Chart representation
Trend Graph
Historic trend function

Communications

RS232 PC communications
USB port
TCP/IP option
Web hosting

Data Storage

Flash Card
PC Transfer

Power

11-30VDC or 95-265 VAC

Connectors

Internal detachable screw terminals, enclosure compression glands.

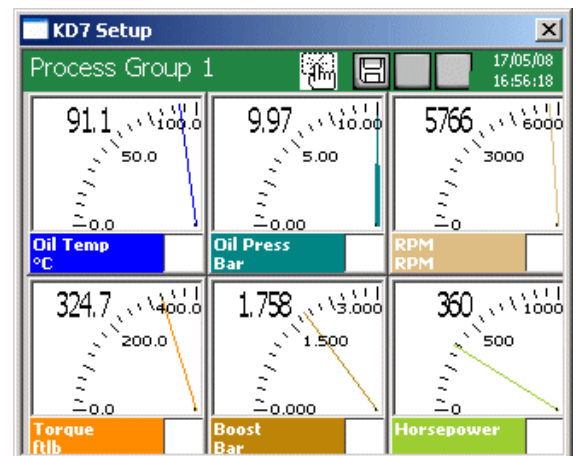
Sealing

IP65 as standard for wall mount version

Working Temperature

0 to 50 degrees C 5 to 100% RH.

SCREEN RECORDER KD.7 TYPE



Water Weights Inc.
Locations Nationwide

International Tel 1-909-626-8316
US Toll Free: 888-998-3787
www.waterweightsinc.com
marketing@waterweights.com

An ISO9001:2008 Certified Company