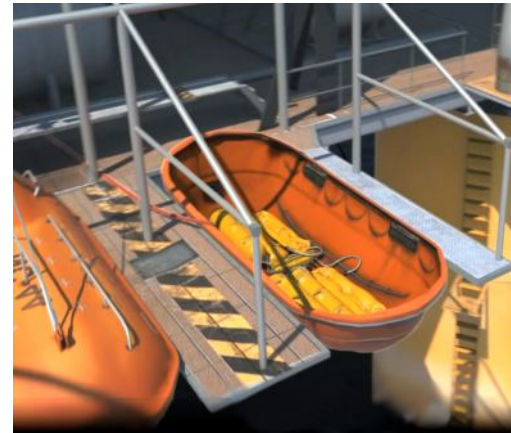


WATER WEIGHTS® Lifeboat & Gangway Test Bags

WATER WEIGHTS® life boat testing kits can be used to apply an evenly distributed load to a lifeboat, gangway, or any other object that has to be proof loaded.

These specially designed WATER WEIGHTS® lifeboat & gangway testing bags are part of a complete lifeboat/gangway testing set. A remote system with a manifold and filling hoses, allows proof load testing to be conducted safely, without entering the craft in the 'dangerous' overload situation.

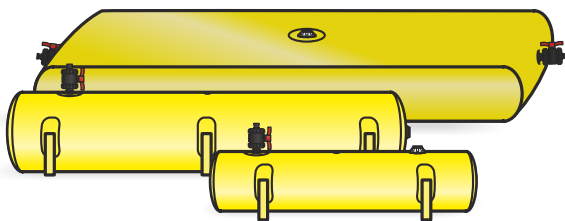
Larger gangways and small bridges can be tested with our 1 tonne Matress bags (MB1000). Those bags offer much flexibility by their shape, and higher capacities can be achieved because of their higher capacity than life boat bags.



Technical data

Branding: WATER WEIGHTS®
 Material: PVC coated Polyester Fibre
 Coupling: Standard 1" Camlock F
 Tolerance: ±2% of filled weight
 Fitted with: Pressure relief valve

| Type | Size when empty (packed set: lxbxh) | Size when filled (length x width x height) | Weight (each empty) | Capacity (each) |
|--------|--|---|------------------------|--------------------|
| LB100 | 120 x 100 x 120 | 110 x 28 Ø | 6 kg | 100 kg |
| LB375 | 120 x 100 x 120 | 250 x 44 Ø | 10 kg | 375 kg |
| MB1000 | 120 x 100 x 120 | 300x130x30 | 21 kg | 1000 kg |



Note: WATER WEIGHTS® Lifeboat bags are supplied as complete sets only, consisting of 20x LB100, 8x LB375 or 16x LB375, complete with Manifold, Airpump, Hoses and transport case.

Note: Matress bags (MB1000) are supplied as single units. Matress bags should not be used in lifeboats, only for small bridges and gangways. Please contact us for possibilities.

