



4 Little Brook Rd., West Wareham, MA 02576
Tel: (508) 291-0057 Fax: (508) 291-2491
Email: info@edgetech.com Web: www.edgetech.com

Application Note: 4200/4205 Topside Modem Compatibility

Background:

The EdgeTech 4200 and 4205 Side Scan Sonar systems have 2 main components:

1. Tow Fish
2. Topside

The Tow Fish and Topside each have a modem inside that allows the data to be passed between the two units. Since the 4200 was introduced in 2004, the Tow Fish has used an Aware modem and the Topside have utilized many different modems due to obsolescence. The list below details some of these in the order of age.

- Zoom X5 versions 2.1, 2.5, 3.0
- TP-LINK TD-8840T
- D-Link DSL-520B.
- Mestech - MVD1002 (*This is the current version.*)

In early 2019, the Aware modem used in the Tow Fish became obsolete and was replaced with the Mestech modem. This caused compatibility issues between the Tow Fish and older Topsides. In late 2019, the 4205 was introduced to replace the 4200. Since the 4205 Tow Fish uses the same Mestech modem, the compatibility issue still exists with older Topsides.

Then in 2021, the D-Link DSL-520B modem installed in the Topside units became obsolete and was replaced by the Mestech MVD1002.

The Topsides purchased today will work with the 4200 and 4205 Tow Fish, however a new 4205 Tow Fish purchased today may or may not work with an older Topside. If you are considering mixing and matching older Topsides and Tow Fish please read below to determine if an upgrade may be in order.

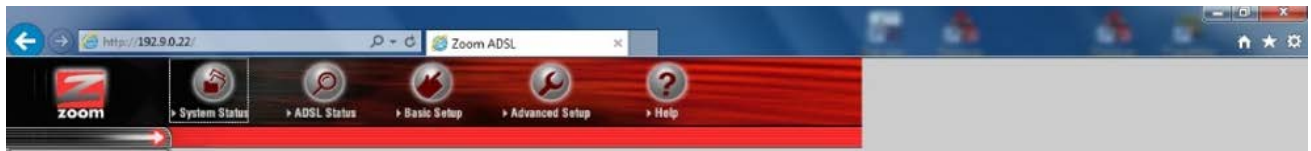
Topside Modem Upgrade Kits:

Upgrade kits containing the D-Link DSL-520B modem are available for older Topsides. The upgrade kit is needed for any Topside that does not have the D-Link DSL-520B installed and means an upgraded Topside can then be used with all 4200 and 4205 Tow Fish.

- 701-DL Modem Upgrade Kit with all Hardware and Instructions (PN 0022906).
- StarMux III Modem Upgrade Kit with all Hardware & Instructions (PN 0023176).
- Upgrade kits for the 4200 Rackmount Topside and the 4200P Portable Topside are currently not available.

Checking which modem is installed in an older Topside Unit: This can be done by either logging in to the modem using a web browser or physically verifying the modem installed.

- For all Zoom modem versions, enter 192.9.0.22 (username = admin; password = zoomadsl) into a web browser and verify the **Zoom** logo is displayed.



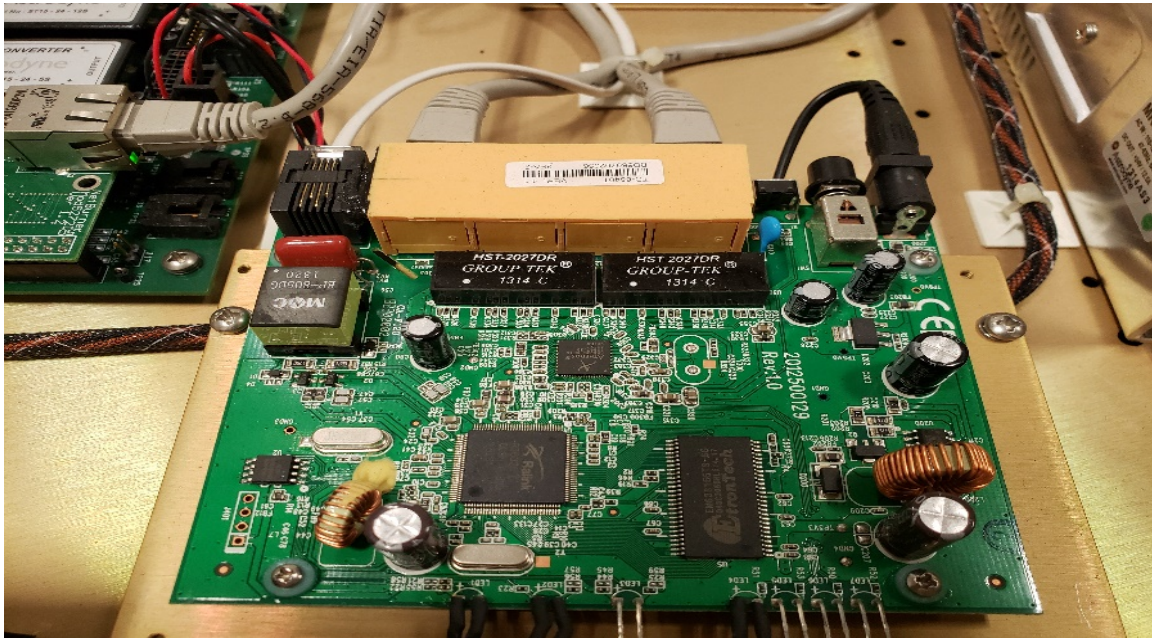
Alternatively, a photo of the Zoom modem is shown below.



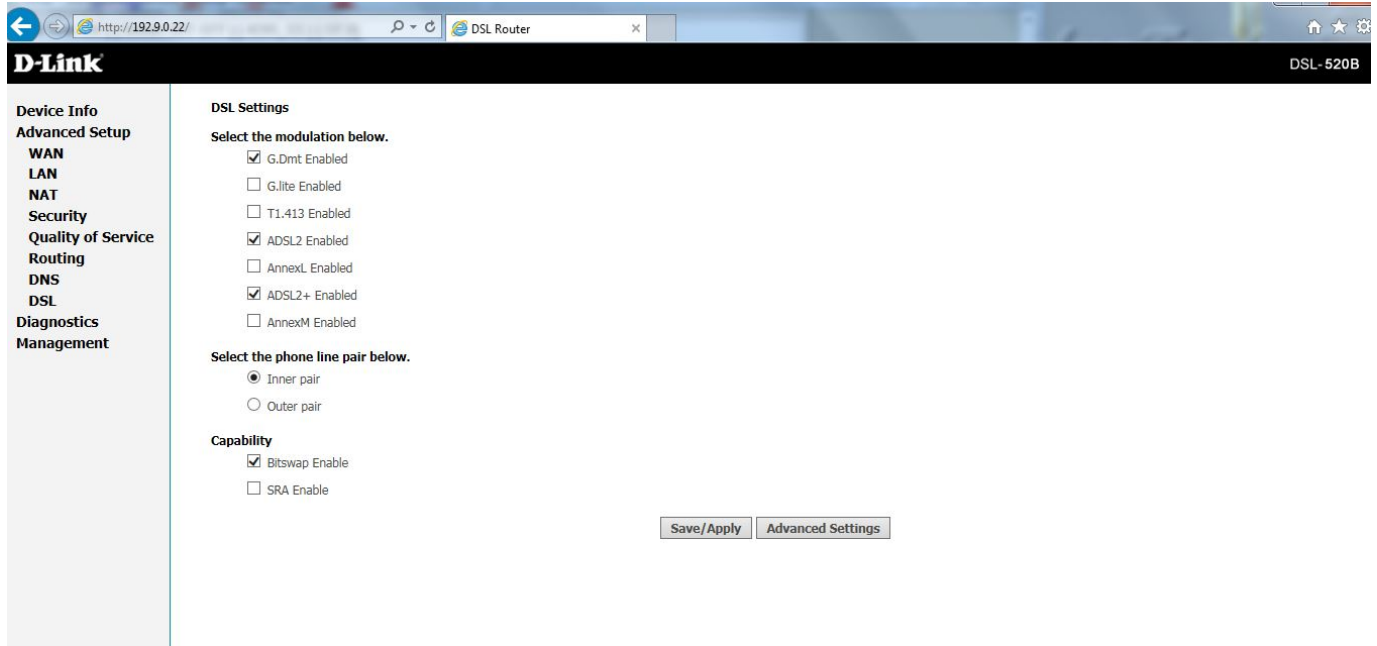
- For **TP-LINK** modems, enter 192.9.0.22 (username = admin; password = admin) into a web browser and verify the **TP-LINK** logo is displayed.



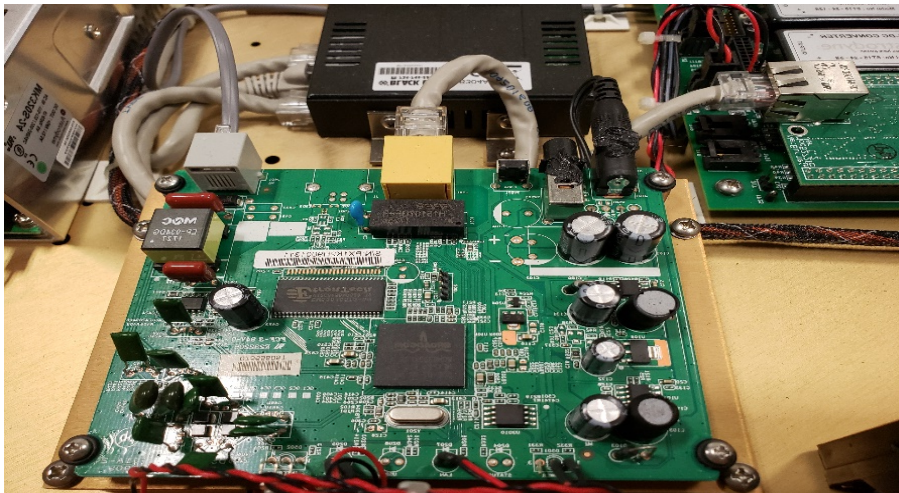
Alternatively, a photo of the TP-LINK modem is shown below.



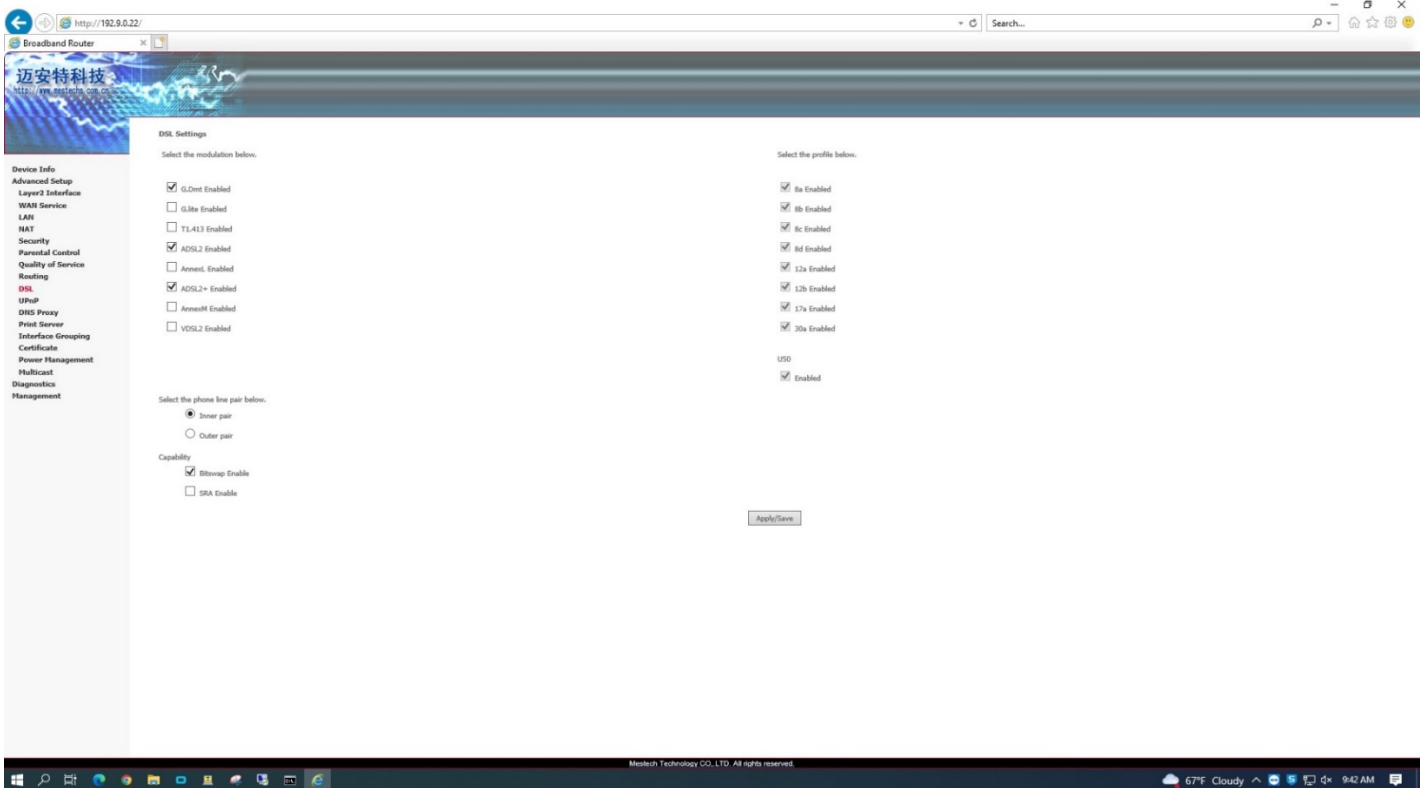
- For D-Link modems, enter 192.9.0.22 (username = admin; password = admin) into a web browser and verify the screen below with the **D-Link** logo is displayed.
- To ensure the D-Link modem is compatible with the 4200 and 4205 Tow Fish, navigate to Advanced Setup>DSL and verify the boxes for G.DMT and ADSL2 are checked as shown below, then save if necessary.



A photo of the D-Link modem is shown below.



- For Mestech, enter 192.9.0.22 (username = admin; password = admin) into a web browser and verify the screen below with the Mestech logo is displayed.
- To ensure the Mestech modem is compatible with the 4200 and 4205 Tow Fish, navigate to Advanced Setup>DSL and verify the boxes are checked as shown below, then save if necessary.



A photo of the Mestech modem is shown below.

