



The NETmc Marine DVR is a new concept in video acquisition; a single unit that can be upgraded in the field simply by adding a new code, it replaces all previous DVRs in our product range.

The basic configuration is a single composite channel recorder, but more channels can be added as well as overlay, black box functionality and compatibility with third party software.

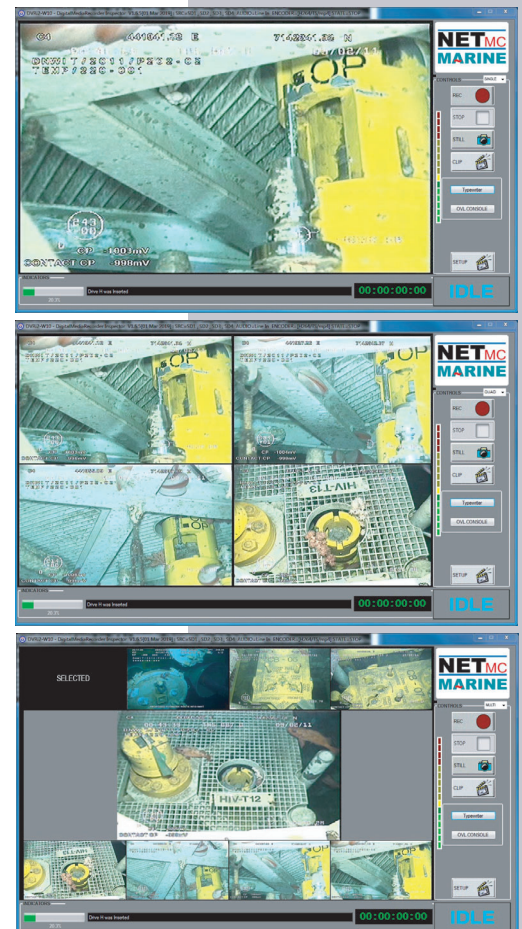
Imagine being able to convert a single channel unit to a full pipeline spread as easily as pasting in a code.

Other options include HD recording, compatibility with our range of DVCi cameras and support for the growing IP / RTSP camera market. The system can also be installed in ruggedised cases for portability.

N.B. future options may require hardware upgrades as well.



Typical GUI layouts:





DVR

System Options

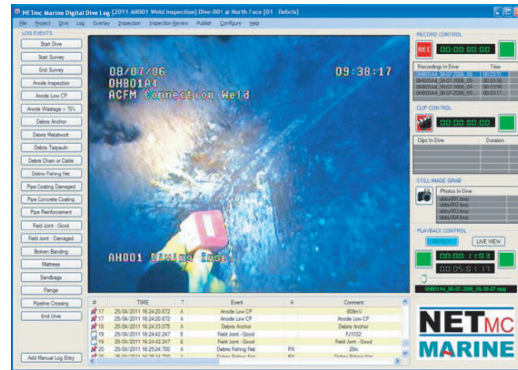
Some of the upgrades available:

- multiple input channels
- Hi-Def input (HD-SDi and/or HDMI)
- IP Camera input (RTSP)
- Video Overlay
- Blackbox recording
- Integrity Software Control (Coabis / Eiva / Apollo / NEXUS)

Digital Dive Log

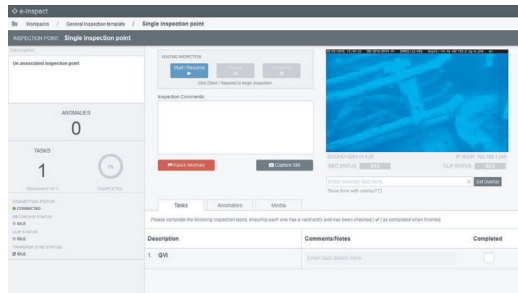
The Digital Dive Log (DDL) is an interactive electronic dive log for use with the NETmc Marine DVR.

The software automates the input of data normally recorded during ROV and diving operations - creating customised Dive Logs in Word and HTML format.



E-Inspect

Stand-alone workpack driven inspection / video acquisition package - for each workpack a list of Inspection Points or groups of associated Inspection Points can be created, to which Tasks are allocated e.g. take CP



Chassis Options:



1U Rack Mount
Base model
1 channel
composite video
Hi-Def



4U Rack Mount
configurable for mixed input types -
HiDef and composite
supports extra storage
multi channel options



Peli Case version
ruggedised construction
IP rated keyboard and connectors

NETmc Marine DVR Description



1. General

In 2019 NETmc Marine introduced a new DVR developed to replace all previous models. The previous models were DVRi; DVRi HD; 73Fifty; 73Fifty Black Box; 73fifty Harvester; Tri-Ops; X-Ops; Four264; Four263.

2. Concept

The new DVR has been designed to be upgradeable in the field with upgrades being purchased or rented. This gives the owner great flexibility and control of costs. As an example a client that uses the DVR for general use may one day have to perform an inspection with Coabis or our own E-inspect software. In this scenario the client can buy the basic DVR and then rent or buy the Coabis upgrade as and when required.



3. Design

There are three chassis styles available. A 1U single channel DVR, a 4U multi-channel DVR, and a Peli case portable system.

4. Options

a. The 1U box can be supplied with either an SD CV input or an HD SDI input. On top of that you can add Black Box, video overlay; clips and Coabis integration; each separately. You can buy any of the options and upgrade the DVR by a soft code, or you can rent the options for a specific project.

b. The 4U box base configuration has a four channel SD CV input card, with a single channel activated and you can then buy or rent a code to upgrade to extra channels.

The unit can also be supplied with combinations of HDMi and HD-SDI inputs - giving multiple channels of which any four can be recorded.

In addition to the options for the 1U box, the 4U unit can also be upgraded to a pipeline system - this is useful for interfacing to survey navigation software like EIVA NaviPac.

c. The Peli case system can be customised to suit your needs - camera / lamp controls, etc. Contact sales for further info.

Current Setup

Replacement



Single ch DVR



Single ch DVR



Single ch DVR
and Blackbox DVR



Single ch DVR
with blackbox option



as above with Harvester
to copy files to network



as above
harvester operation
included in new DVR



as above with Multi ch



Multi ch DVR
(options support different inputs
e.g. HD-SDI, HDMI, RTSP etc)



XOPs Multi ch DVR
SD CV input only



Multi ch DVR
(options support different inputs
e.g. CV, HD-SDI, HDMI, RTSP etc)



DVRi single ch
inspection recorder



Single ch DVR
with Integrity and Overlay options