

NORBIT - iWBMS TURNKEY MULTIBEAM SONAR SYSTEM

For High Resolution Bathymetry

Introducing the all-new, compact and high-resolution curved array bathymetric mapping system from NORBIT.

This all-in-one tightly integrated broadband multibeam kit offers high resolution bathymetry over a wide swath. Having a globally leading GNSS/Inertial Navigation System embedded onto the sonar ensures fast and reliable mobilization and highest quality sounding for installations in all conditions.

The WBMS-series are based on a flexible sonar platform that utilizes the latest in analog and digital signal processing. Combined with broad R&D expertise, With broad R&D expertise NORBIT has developed, from the ground-up, exciting new technology that allows existing and new applications to benefit from the advantages offered by a compact wideband curved-array multibeam sonar.



Features

- ✓ Multibeam Sonar Tightly Integrated With State of The Art GNSS-aided Inertial Navigation System
- ✓ 80kHz Bandwidth
- ✓ Side-scan, Water Column, Backscatter
- ✓ Simple Ethernet Interface
- ✓ Integrated Sound Velocity Probe
- ✓ Hydrodynamic Fairing
- ✓ Mounting Bracket Included
- ✓ FM & CW Processing
- ✓ Flexible Power
- ✓ Exceeds IHO Special Order, CHS Exclusive Order & USACE New Work

Applications

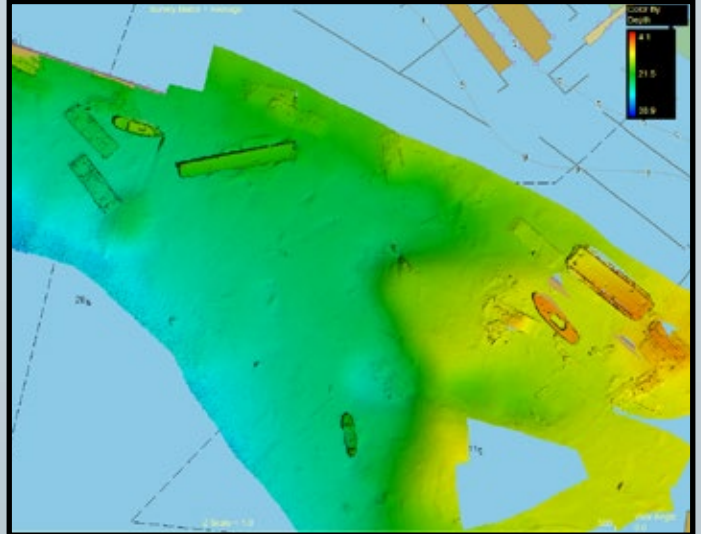
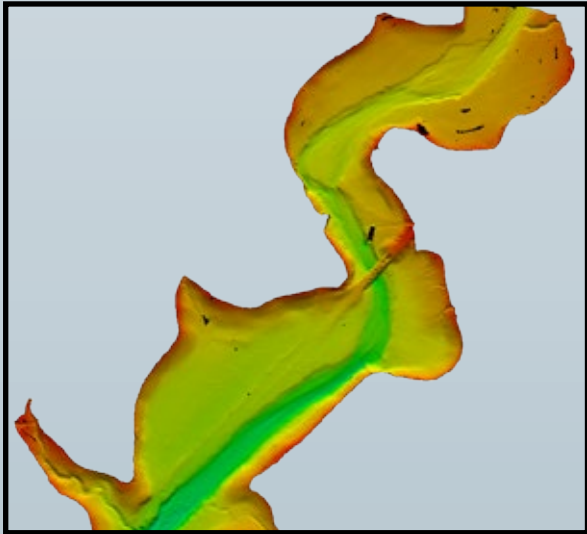
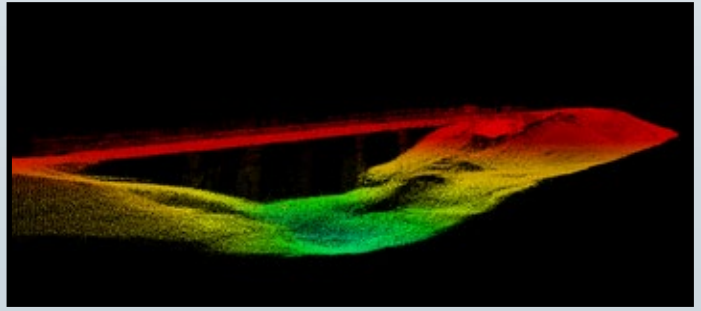
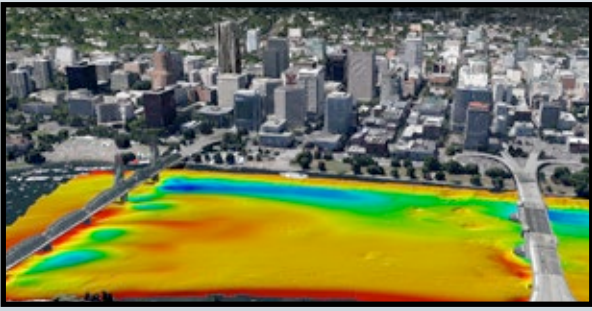
- ✓ Shallow Water Bathymetry
- ✓ Pipeline Surveys
- ✓ Pond, River and Estuary Surveys
- ✓ Harbor and Lake Surveys
- ✓ USV & UUV
- ✓ MCM & Littoral Combat Zone Surveys
- ✓ Open Ocean Coastal Surveys

Options

- ✓ Senior Hydrographer For Support and Training
- ✓ Navigation Post Processing Software
- ✓ Sound Velocity Profiler
- ✓ Acquisition and Processing Software
- ✓ Laptop
- ✓ Turnkey Survey Platform
- ✓ Permanent Hull Mount Option
- ✓ Pole Mount and Travel Option
- ✓ 200kHz Version
- ✓ Narrow Beam Along Track 0.9°

EXPERTS in sensor equipment providing telemetry and communication solutions for harsh environments. NORBIT develops and delivers innovative products - allowing you to explore more.

NORBIT iWBMS Wideband Multibeam Sonar For Turnkey High Resolution Bathymetry



TECHNICAL SPECIFICATION

SWATH COVERAGE	7°-179° , (140° NOMINAL)
RANGE RESOLUTION	<10mm (ACOUSTIC)
NUMBER OF BEAMS	256-512 EA & ED
OPERATING FREQUENCY	400kHz w/ 80kHz BANDWIDTH (200-700kHz POSSIBLE)
DEPTH RANGE	0.2-275m (160m TYPICAL)
PING RATE	UP TO 50Hz, RANGE DEPENDENT
RESOLUTION	0.9° ACROSS TRACK, 1.9° ALONG TRACK @400kHz
POSITION ACCURACY	0.02-0.1m (RTK)
HEADING ACCURACY	0.03° (RTK) WITH 2m BASELINE
PITCH/ROLL ACCURACY	0.02° INDEPENDENT OF BASELINE
HEAVE ACCURACY	5cm OR 5% (2cm RTK)
WEIGHT	APPROX. 9.5kg (AIR) <6kg (WATER)
INTERFACE	ETHERNET
CABLE LENGTH	STD 8m, OPTIONS: 20m, pigtail, custom up to 50m
POWER CONSUMPTION	55W MAX (10-28VDC, 110-240VAC)
OPERATING/STORAGE TEMP.	-4°C TO +40°C (TOPSIDE -25°C TO +40°C) / -20°C TO +60°C

