

SeaBat[®] 7160

Multibeam Echo Sounder System

The SeaBat 7160 provides an unbeatable combination of range, resolution, portability and powerful features.

The SeaBat 7160 transducer array is comprised of linear receive and transmit arrays mounted together on a support base. The T-shaped array geometry provides the basis for a compact, high-resolution sonar which is easily installed for portable or hull mounts - a first for a high-resolution system in this frequency range. The system features a pitch-stabilized transmitter and an active roll compensated receiver.

Performance enhancements over the SeaBat 8160 include the addition of 512 high density equi-distant beams, variable swath coverage, beam uncertainty measurement, water column data and many other efficiency enhancing features.



FEATURES

FREQUENCY

- 44kHz (nominal)

SWATH

- Swath coverage greater than 4 x water depth

DEPTH

- Operational depths 10m to 3000m

BEAMS

- 512 Equi-Distant
- 150 Equi-Angle

FLEXIBLE INSTALLATION

- Hull-mount or portable

FEATURES

- Water column data
- Variable and steerable swath
- Pitch & Roll stabilization
- Tracker Autopilot
- Adaptive & Manual Gates
- Integrated Teledyne PDS (optional)

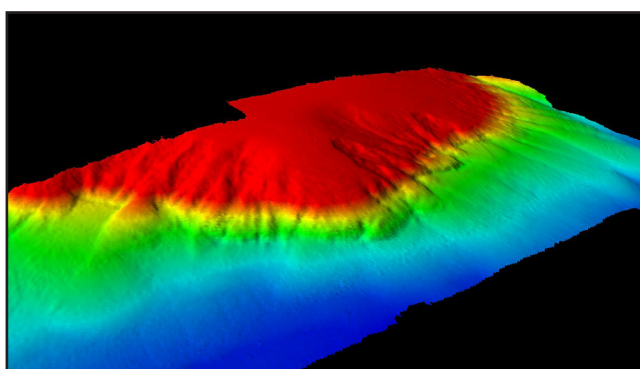


SeaBat[®] 7160 Multibeam Echo Sounder System



SEABAT 7160 SYSTEM SPECIFICATIONS

Frequency	44kHz (nominal)
Range resolution	12cm
Swath coverage	Greater than 4x water depth
Typical depth	3m to 2500m
Max depth	3000m
Number of beams	512 Equi-Distant / 150 Equi-Angle
Along-track beamwidth	1.5°
Across-track beamwidth	2.0° at nadir (nominal)
Pitch stabilization	±10°
Max update rate	35 Hz
Transducer depth rating	60m
System supply	115V/230V 50/60 Hz,500W
System control	Trackball or from Ethernet
Data output	1GB Ethernet
Data uplink	High-speed digital coax
Temperature: operating, storage	Operating: -5° to +40°C, storage: -30° to +55°C
Transducer array dimension	1477mm x 1100mm x 100mm
Dimension transceiver array	265mm x 483mm x 469mm
Weight hydrophone	34kg (air) / 14.6kg (water) including 15m cable
Weight transmitter	42kg (air) / 17.5kg (water) including 15m cable



WHY CHOOSE A SEABAT 7160 SYSTEM?

- High-resolution medium depth sonar which is easily installed for portable or hull mounts
- High performance - excellent swath
- High density beams
- Water column data
- Ideal for continental shelf mapping
- Upgrade from SeaBat 8160



TELEDYNE MARINE
 RESON
 Everywherelook™

www.teledynemarine.com/reson

Tel. +45 4738 0022 (Europe) • Tel: +1 805 964 6260 (USA)

Email: reson@teledyne.com