

Teledyne Odom Hydrographic

Echotrac CV100

Single or Dual Channel
Echo Sounder

Compact Survey Solution

Move into the digital age with echo sounders from Teledyne Odom Hydrographic. If your survey does not require traditional paper records, then forget about piles of hard copy – the CV-100 has eliminated all that in favor of digital imaging on a PC-based data acquisition system.

With the same technology as the popular Echotrac CV and Echotrac MKIII, including Ethernet communications, Teledyne Odom's CV100 single or dual channel sounder is ready to simplify your transition to the convenience of an all-digital system.



Photo courtesy of Teledyne Oceanscience.

PRODUCT FEATURES

- Multiple time varied gain (TVG) curves (10, 20, 30, and 40 log)
- DSP digitizer with manual filter control
- Manual or auto scale changes (phasing)
- Calibration menu with controls for transducer draft and index plus sound velocity and bar depth controls
- Rugged and waterproof (IP65)
- Help menus
- Flash memory upgradeable
- Auto Gain and Auto Power Modes for minimal operator input
- Suitable for autonomous vessels



Echotrac CV100

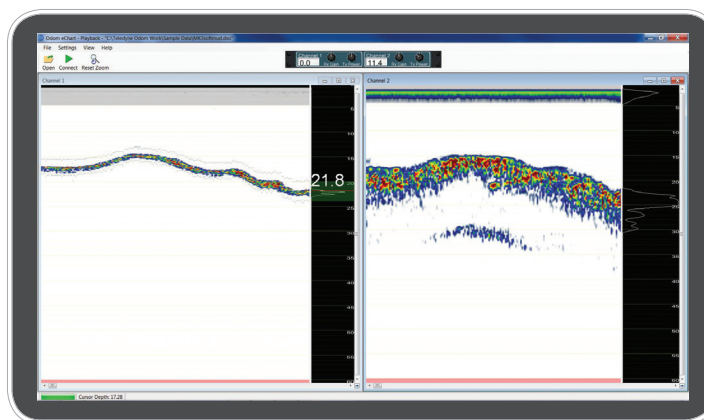
Digital Hydrographic Echo Sounder



TECHNICAL SPECIFICATIONS

Single Channel Configuration¹	High: 100kHz-750kHz (manual tuning in 1-kHz steps) Low: 3.5kHz-50kHz (manual tuning in 1-kHz steps) variable receiver bandwidth
Dual Channel Configuration	High: 100 kHz-340kHz Low: 24 kHz-50kHz
Resolution	0.01m, 0.1 ft.
Accuracy <i>(corrected for sound velocity)</i>	200kHz-0.01 m +/- 0.1% depth 33kHz-0.10 m +/- 0.1% depth
Output Power	Up to 300 watts RMS < 1 watt minimum
Ping Rate	Up to 20Hz in shallow water (10m) range
Depth Range	From <30cm to 600m (depending on frequency and transducer selected)
Input Power Requirement	9-32VDC < 15 watts
Weight	5kg (11lbs)
Dimensions	28cm W (11 in) x 23cm H (9 in) x 11.5cm (4.5 in) D
Mounting	Desktop or bulkhead mount (fixing hardware included)
Ports/Interface	Ethernet (LAN) plus 4 x RS232 or 3 x 232 and 1 x RS422 Inputs from external computer, motion sensor, sound velocity Outputs to external computer or remote display Output string: Odom Echotrac SBT, NMEA DBS, NMEA DBT, DESO 25 Heave Input-TSS1 or "Sounder Sentence" Echotrac Control SW - Simple Windows compatible graphical user interface Storage of full ping to seabed data in DSO format with e-Chart (easily compressed or converted to .XTF for additional processing)
Environmental	Operating 0-50°C Storage -20°-70°C
Options	Heave Sensor
Software Control & Logging Software	Windows based software included: eChart Display

1. Frequency agile in 2 bands (specify band at time of order).



eChart Software.



TELEDYNE
ODOM HYDROGRAPHIC
Everywhereyoulook™

Teledyne Odom Hydrographic

Tel: +45 4738 0022 (Europe) • Tel: +1 805 964 6260 (USA)

Email: odom@teledyne.com

www.teledynemarine.com/odom-hydrographic/

Specifications subject to change without notice.
© 2018 Teledyne Odom. Hydrographic. All rights reserved.

PLD19107-1