

0.6 Te WLL - 1200m - Electric Winch – DS32



TECHNICAL SPECIFICATION

Weight without cable (Kg)	Cable diameter (mm)	Capacity (m)	Line speed (m/min)	WLL (Kg)		Brake (Kg) Minimum 1.5 WLL	
				First Layer	Top Layer	First Layer	Top Layer
730	8.18	1200	60	600	406	900	609
Supply Required		380-440V-3 Ph- 50/60 Hz		Cable Lead-off Angle		+/-15° Horizontal plane Min + 0° Max + 45° Vertical plane	
Winch Electrical Motor		7.5 Kw IP56 IE3		Frame details		Crash frame with guards, fork lifting pockets and certified lifting lugs	
Local Proportional Control Hardwired Remote Control		Bi-directionally proportional joystick and speed control potentiometer, 50m hard wired remote		Winch drum dimensions		Drum core Ø 368 mm, Drum Length 575 mm, Flange Ø 600 mm	
Level wind		Electrically automatic pulse driven level wind with manual adjustment		Drum details		Plain drum; the wire is stored in 13 lays with 66 turns per lay	
Dimensions (LxWxH) Footprint		1216 x 1410 x 1700 mm 1175 x 1220 mm		Cable		Rochester A302327	
Slip ring		Designed to accept CSW-112A Slip Ring or similar not within scope of supply		Render function		HMI and Load Pin to set and measure line tension and limit	

Principle of Operation:

The Winch drum is driven by a 7.5 kW SEW electric gearmotor through an output shaft. The drum motor Variable Speed Drive drives the electrical motor of the Drum with variable speed according to the control signals and rpm setpoint of the potentiometer. The non-drive side housings the bearing and slipping. The Slipping is not within the scope of supply.

The SEW Electric Motor combination is fitted with a failsafe brake unit. The brake, being failsafe, always defaults to on should, for any reason, the electrical supply is lost or the joystick is in its centre (neutral) position.

The level wind electrically driven from the 0.37 kW SEW Electric gearmotor. The level wind is PLC controlled, is automatic with a manual override. The Level wind can be adjusted to accept a variety of cable diameters if required.

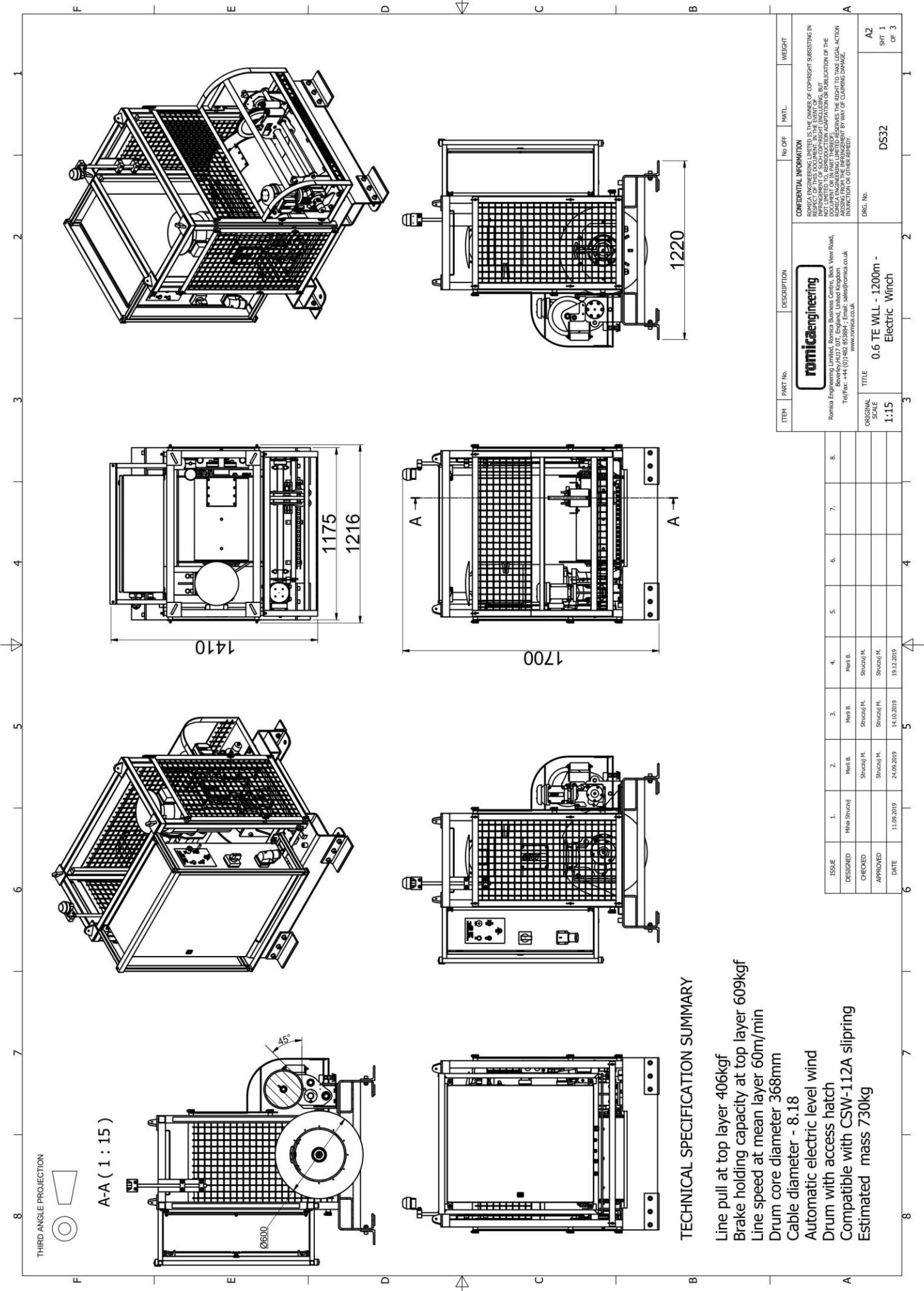
The winch is controlled via a joystick and speed potentiometer which are mounted locally on the Electric SSS Winch Enclosure and are duplicated on the remote control console.

The winch is supplied with the following:

- 1 Set - sacrificial steel feet/mounting plates for mounting at ship
- Marine grade paint system (Details can be supplied on application)
- 1 Set - Master Links and Shackles or a 4 leg lifting sling and shackles
- 12 Month Warranty
- 1 Off – Winch running flashing lights
- Canvas Cover for transport and storage
- Operation and Maintenance Manual in Electronic Format

Optional extras: - please note these are not in the scope of supply but can be offered at extra cost.

- 1 Off – Slip Ring details to be supplied with order
- 1 Off – Full Spares Kit
- 1 Set – Spare sacrificial feet/mounting plates
- Remote Control wireless



TECHNICAL SPECIFICATION SUMMARY

- Line pull at top layer 406kgf
- Brake holding capacity at top layer 609kgf
- Line speed at mean layer 60m/min
- Drum core diameter 368mm
- Cable diameter - 8.18
- Automatic electric level wind
- Drum with access hatch
- Compatible with CSW-112A slinging
- Estimated mass 730kg

ITEM	PART No.	DESCRIPTION	No OFF	MATL.	WEIGHT
romicaengineering					
<small>CONFIDENTIAL INFORMATION</small> ROMICA ENGINEERING LIMITED IS THE OWNER OF COPYRIGHT SUBSISTING IN RESPECT OF THIS DOCUMENT. IN THE EVENT OF REPRODUCTION OR PUBLICATION OF THIS DOCUMENT WITHOUT THE WRITTEN PERMISSION OF ROMICA ENGINEERING LIMITED, THE REPRODUCER OR PUBLISHER SHALL BE LIABLE TO ROMICA ENGINEERING LIMITED FOR ANY AND ALL DAMAGES AND LOSSES SUFFERED BY ROMICA ENGINEERING LIMITED AS A RESULT OF SUCH REPRODUCTION OR PUBLICATION. ROMICA ENGINEERING LIMITED RESERVES THE RIGHT TO TAKE LEGAL ACTION AGAINST FROM THE INFRINGER BY WAY OF CLAIMING DAMAGES, INTEREST AND COSTS ON OTHER BASIS.					
<small>Romica Engineering Limited, Romica Engineering Centre, Beck View Road, Beckingham, Lincs LN12 0JF, England, United Kingdom Tel/Fax: +44 (0)1462 853884, Email: sales@romica.co.uk www.romica.co.uk</small>					
ORIGINAL SCALE	1:15	TITLE	0.6 TE WLL - 1200m - Electric Winch		
DRG. No.	DS32		A2		
		SHT 1		OF 3	

ISSUE	1.	2.	3.	4.	5.	6.	7.	8.
DESIGNED	Miha Stuczu	Mari B.	Mari B.	Mari B.				
CHECKED		Stuczu M.	Stuczu M.	Stuczu M.				
APPROVED		Stuczu M.	Stuczu M.	Stuczu M.				
DATE	11.09.2019	24.09.2019	14.10.2019	19.12.2019				