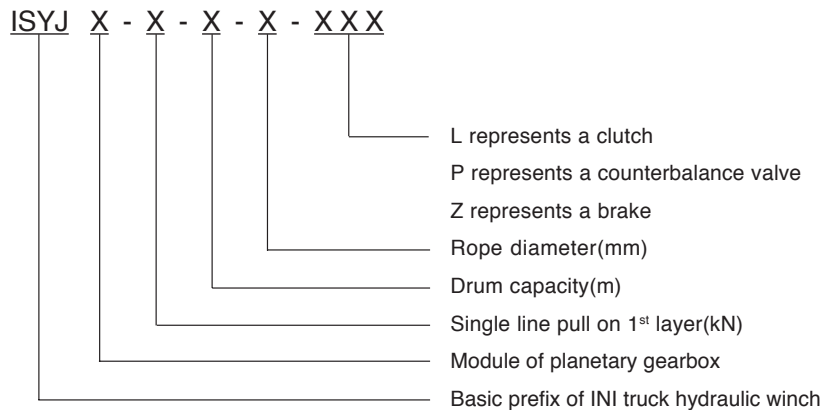


ISYJ Hydraulic Winch Series

1. Brief Introduction

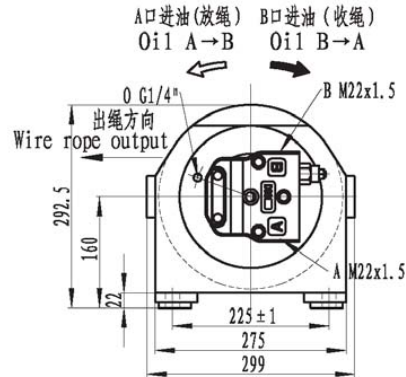
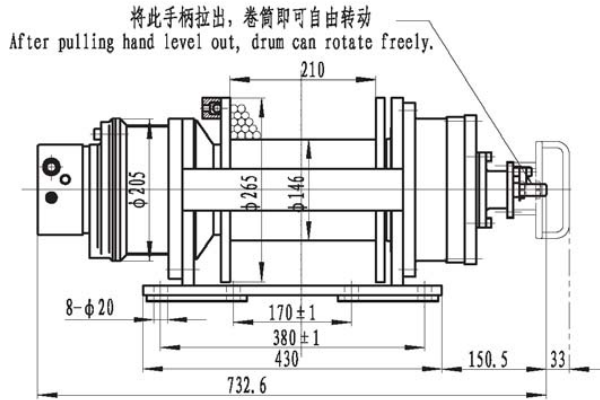
The ISYJ hydraulic winch series are patent products of our company and consist of a variety of distributors with shuttle valves controlling the brake and single or dual counterbalance valves, INM type hydraulic motor, Z type brake, C type planetary gearbox, drum, frame and so on(to see hydraulic diagram). The user only needs to provide a hydraulic power pack and directional valve. Due to the winches fitted with diversified valve block, it not only simplified the hydraulic system, but also improved the reliability of the winches. In addition, the winches feature a high efficiency at start-up and operation, low noise and energy consumption, and have a compact figure and good economic value. Therefore, the series have been widely applied to hoisting salvage vehicles, cross country vehicle, military heavy truck, bulldozer. It can be used to rescue various vehicles damaged or involved in mud and also used to pull heavy objects and to save self. ISYJ series hydraulic winches have been well sold in China and also have been exported to Netherlands, the Middle-east, the south-east Asia, Korea and so on.

2. Model Options



3. Options Example

ISYJ2.5-10-103-8-ZPL represents that the modules of the gearbox of the winch is 2.5. The rated single pull on 1st layer is 10kN, drum capacity is 103m, rope diameter is 8 mm. The winch is fitted with brake, counterbalance valve and clutch.



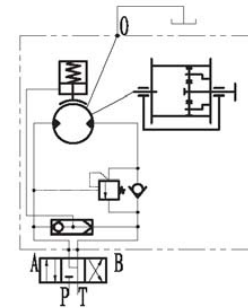
型号 Model	第一层 The 1st layer		总排量 Total displacement (ml/r)	工作压力差 Working pressure diff.(MPa)	供油流量 oil flow supply (L)	钢丝绳直径 Rope diameter (mm)	层数 Layer	容绳量 Wire rope Capacity (m)	液压马达 Hydraulic motor	行星减速器 Gearbox model	重量 Weight (kg)
	拉力 Pull (KN)	绳速 Rope speed (m/min)									
ISYJ2.5-10-75-8-ZPL	10	0~12	407	15	12	8	1	12.5	INM05-75D60101	C2.5D(i=5.5)	90
							2	26			
							3	41.5			
							4	58			
							5	75			
ISYJ2.5-20-69-9-ZPL	20	0~12	830.5	17.5	23	9	1	11	INM05-150D60101	C2.5D(i=5.5)	90
							2	23.5			
							3	37.5			
							4	52.5			
							5	69			
ISYJ2.5-30-64-10-ZPL	30	0~10	1050.5	17.5	24	10	1	10	INM05-200D60101	C2.5D(i=5.5)	90
							2	21.5			
							3	34.5			
							4	49			
							5	64			

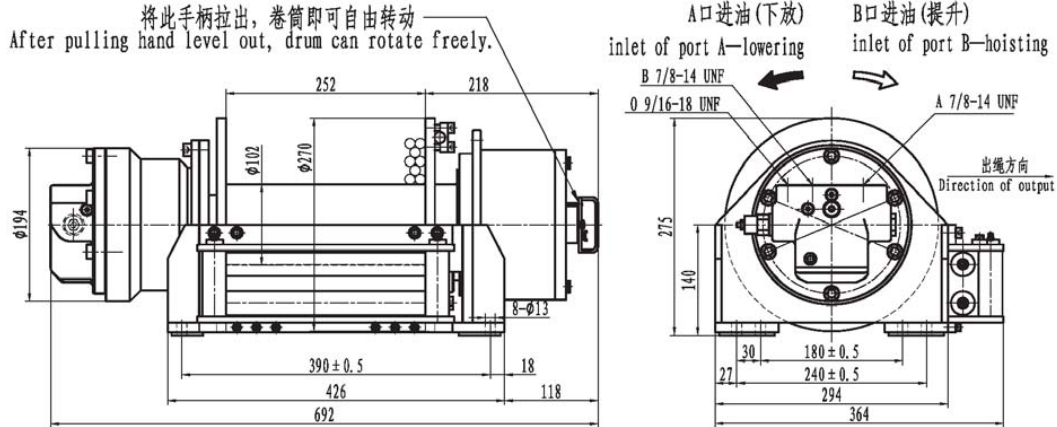
- 注意事项: 1、马达泄漏口0必须直接回液压油箱, 不允许连接至主回油路;
 2、换向阀中位机能必须为“Y”型或“H”型;
 3、液压绞车不允许载人;
 4、绞车在受力情况下不可使用离合器;
 5、离合器合上后必须将防脱出保护板挡住离合器手柄, 以防绞车在工作过程中, 离合器脱出, 发生危险。

- Note: 1.The drain port of the hydraulic motor must be separately connected to the hydraulic reservoir.
 2.The directional control valve should be of a “Y” or “H” type in neutral position to assure the brake and activated.
 3.The winch is not designed for operation involving lifting or moving personnel.
 4.do not use clutch when a force exerts on drum of the winch.
 5.After pulling in clutch, please obtain the retained plate to block hand level of clutch to avoid pulling out clutch in working condition.

液压原理图

Hydraulic principle diagram



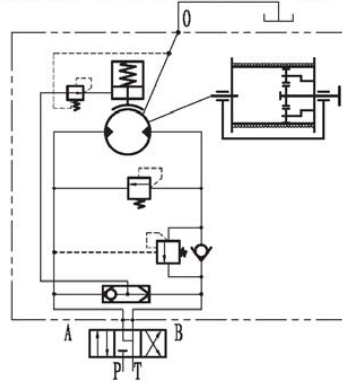


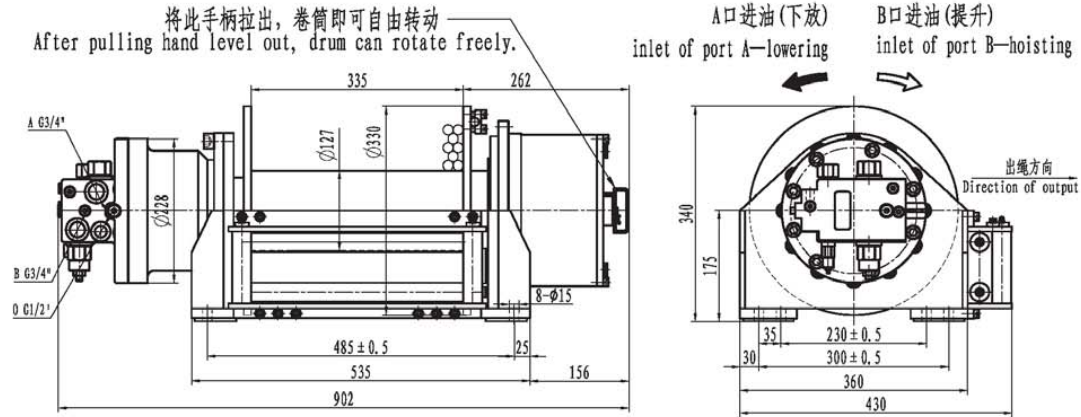
型号 Model	第一层 The 1st layer		总排量 Total displacement (ml/r)	工作压差 Working pressure diff.(MPa)	供油流量 Supply oil flow (L)	钢丝绳直径 Diameter of rope (mm)	层数 Layer	容绳量 Capacity of rope (m)	液压马达 Hydraulic motor	行星减速器 Gearbox model	重量 Weight (kg)
	拉力 Pull (KN)	绳速 Rope speed (m/min)									
ISYJ22-36-52-12-ZPL	36	17	1166	14	60	12	1	7	IM22	C022 (i=53)	95
							2	16			
							3	27			
							4	39			
							5	52			
ISYJ22-45-52-12-ZPL	45	14.3	1378	14	60	12	1	7	IM26	C022 (i=53)	95
							2	16			
							3	27			
							4	39			
							5	52			
ISYJ22-52-52-12-ZPL	52	12.4	1590	14	60	12	1	7	IM30	C022 (i=53)	95
							2	16			
							3	27			
							4	39			
							5	52			
ISYJ22-68-50-13-ZPL	68	10.8	1850	14	60	13	1	7	IM30	C022 (i=53)	95
							2	15			
							3	26			
							4	38			
							5	50			

- 注意事项: 1、马达漏油口O必须直接回液压油箱, 不允许连接至主回油路;
2、换向阀中位机能必须为“Y”型或“H”型;
3、液压绞车不允许载人;
4、绞车在受力情况下不可使用离合器;
5、离合器合上后必须将防脱出保护板挡住离合器手柄, 以防绞车在工作过程中, 离合器脱出, 发生危险。

- Note: 1. The drain port of the hydraulic motor must be separately connected to the hydraulic reservoir.
2. The directional control valve should be of a “Y” or “H” type in neutral position to assure the brake and activated.
3. The winch is not designed for operation involving lifting or moving personnel.
4. do not use clutch when a force exerts on drum of the winch.
5. After pulling in clutch, please obtain the retained plate to block hand level of clutch to avoid pulling out clutch in working condition.

液压原理图 Hydraulic principle diagram



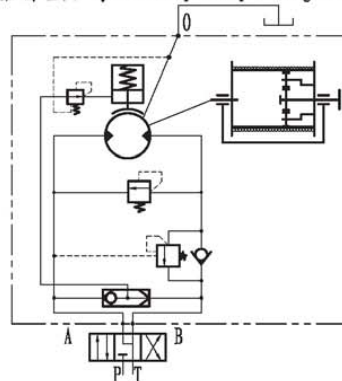


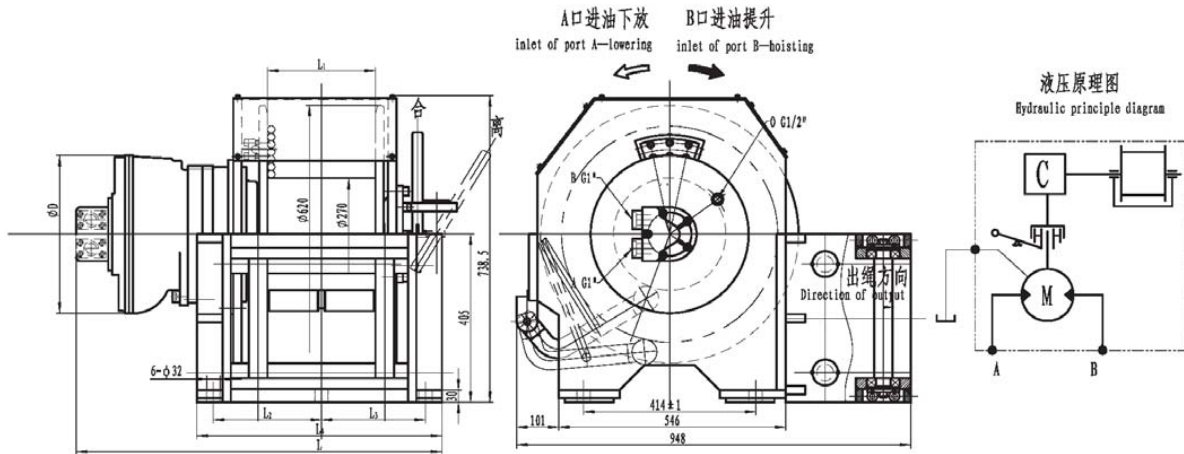
型号 Model	第一层 The 1st layer		总排量 Total displacement (ml/r)	工作压力 Working pressure diff.(MPa)	供油流量 Supply oil flow (L)	钢丝绳直径 Diameter of rope (mm)	层数 Layer	容绳量 Capacity of rope (m)	液压马达 Hydraulic motor	行星减速器 Gearbox model	重量 Weight (kg)
	拉力 Pull (kN)	绳速 Rope speed (m/min)									
ISYJ2.52.5-70-65-16-ZPL	70	12	2584	15	75	16	1	9	TM87	C02.52.5 (i=29.6)	145
							2	20			
							3	33			
							4	48			
							5	65			
ISYJ2.52.5-80-65-16-ZPL	80	12	2584	17	75	16	1	9	TM87	C02.52.5 (i=29.6)	145
							2	20			
							3	33			
							4	48			
							5	65			
ISYJ2.52.5-90-65-16-ZPL	90	9	3563	16	75	16	1	9	TM87	C02.52.5 (i=45.1)	145
							2	20			
							3	33			
							4	48			
							5	65			
ISYJ2.52.5-100-65-16-ZPL	100	9	3563	16	75	16	1	9	TM87	C02.52.5 (i=45.1)	145
							2	20			
							3	33			
							4	48			
							5	65			

- 注意事项: 1、马达泄漏口O必须直接回液压油箱, 不允许连接至主回油路;
2、换向阀中位机能必须为“Y”型或“H”型;
3、液压绞车不允许载人;
4、绞车在受力情况下不可使用离合器;
5、离合器合上后必须将防脱出保护板挡住离合器手柄, 以防绞车在工作过程中, 离合器脱出, 发生危险。

- Note: 1.The drain port of the hydraulic motor must be separately connected to the hydraulic reservoir.
2.The directional control valve should be of a “Y” or “H” type in neutral position to assure the brake and activated.
3.The winch is not designed for operation involving lifting or moving personnel.
4.do not use clutch when a force exerts on drum of the winch.
5.After pulling in clutch, please obtain the retained plate to block hand level of clutch to avoid pulling out clutch in working condition.

液压原理图 Hydraulic principle diagram





基型	型号 Model	第一层 The 1st layer		总排量 Total displacement (ml/rev)	工作压差 Working pressure diff.(MPa)	供油流量 Supply oil flow (L/min)	钢丝绳直径 Diameter of rope (mm)	层数 Layer (层)	容量 Capacity of rope (m)	液压马达型号 Hydraulic motor	行星减速器 型号 Gearbox model	重量 Weight (Kg)
		拉力 (KN) Pull	绳速 (m/min) Rope speed									
1	ISYJ4-40-134-16-LA	40	13.9	2429	18.5	42	16	1	14	INM2-350D47	C4 i=7	650
								2	30			
								3	48			
								4	67			
								5	88			
								6	110			
								7	134			
2	ISYJ4-70-122-18-LA	70	14.8	3795	20.5	69	18	1	12	INM3-700D47	C4D i=5.5	670
								2	27			
								3	42			
								4	60			
								5	79			
								6	100			
								7	122			
3	ISYJ4-100-126-20-LA	100	14.8	6138	18.5	110	20	1	12	INM4-1100D47	C4D i=5.5	690
								2	27			
								3	43			
								4	61			
								5	81			
								6	103			
								7	126			

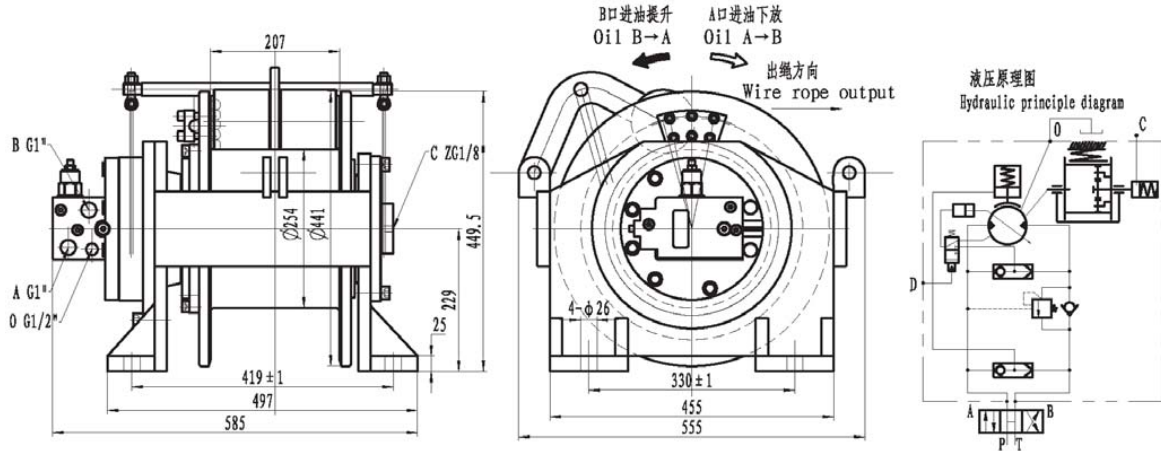
外形尺寸 Profile Dimension

	L1 (mm)	L2 (mm)	L3 (mm)	L4 (mm)	L (mm)	D (mm)
1	260	255	255	590	975	300
2	260	255	255	590	997	380
3	282	266	266	612	1038	410

注：本系列绞车不允许载人，如有需要必须与本公司技术部门联系。

Note: The winch is not designed for operations involving lifting or moving personnel. If you need please contract the R&D department.

333-90/45-63/16-ZPL



主要技术参数

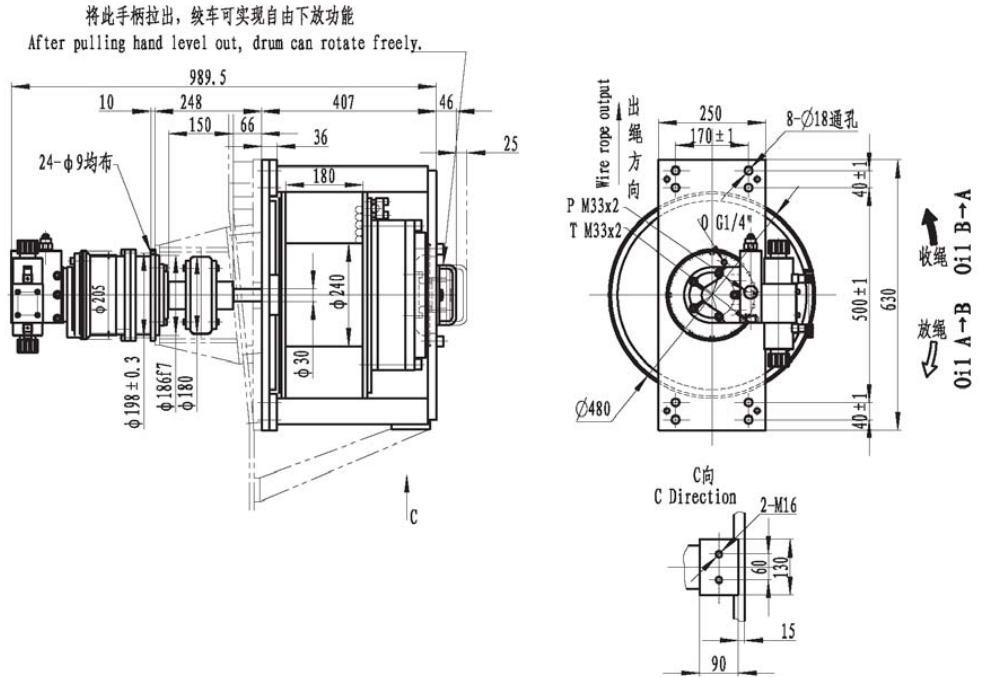
Main Specification

型号	Model	ISYJ333-90/45-63-16-ZPL				
第一层拉力	Pull on the 1st layer (kN)	90	45			
第一层绳速	Speed on the 1st layer (m/min)	20	40			
总排量	Total displacement (ml/r)	4538.22	2269.11			
工作压差	Work pressure diff. (MPa)	20				
供油流量	Oil flow supply (L/min)	119				
钢丝绳直径	Rope diameter (mm)	16				
层数	layer	1	2	3	4	5
容绳量	Wire rope capacity (m)	10	21	34	48	63
液压马达型号	Hydraulic motor	IM86/43				
行星减速器型号	Gearbox model	IGC26 i=52.77				

- 注: 1. 液压绞车不允许载人。
2. 液压绞车工作过程中不可以开启离合器。

- Note: 1. The winch is not designed for operation involving lifting or moving personnel.
2. The operation of switch off clutch must be carried out under stop of the winch. The operation of switch on clutch should be done without load on drum and put the latch of clutch in proper position when working.

2.54-100-46-17.5-ZPL

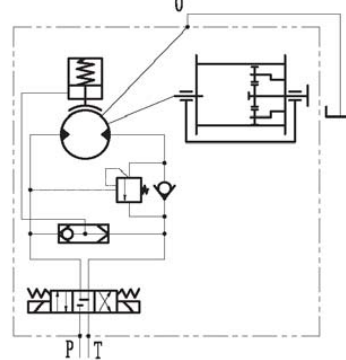


型号 Model	第一层 The 1st layer		总排量 Total displacement (ml/r)	工作压力 Working pressure diff. (MPa)	供油流量 oil flow supply (L)	钢丝绳直径 Rope diameter (mm)	层数 Layer	容绳量 Wire rope Capacity (m)	液压马达 Hydraulic motor	行星减速器 Gearbox model	重量 Weight (kg)
	拉力 Pull (KN)	绳速 Rope speed (m/min)									
ISYJ2.54-100-46-17.5-ZPL	100	0~7	7248	13.5	70	17.5	1	7	INM05-150D47	KC2.54(i=48)	330
							2	15.5			
							3	24.5			
							4	35			
							5	46			

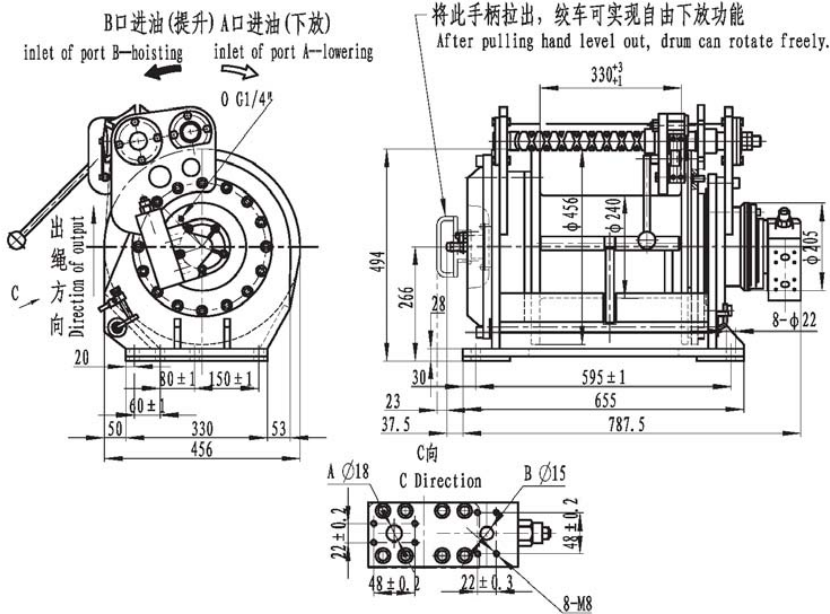
- 注意事项: 1、马达泄漏口O必须直接回液压油箱, 不允许连接至主回路;
2、换向阀中位机能必须为“Y”型或“H”型;
3、液压绞车不允许载人;
4、绞车在受力情况下不可使用离合器;
5、离合器合上后必须将防脱出保护板挡住离合器手柄, 以防绞车在工作过程中, 离合器脱出, 发生危险。

- Note: 1. The drain port of the hydraulic motor must be separately connected to the hydraulic reservoir.
2. The directional control valve should be of a “Y” or “H” type in neutral position to assure the brake and activated.
3. The winch is not designed for operation involving lifting or moving personnel.
4. do not use clutch when a force exerts on drum of the winch.
5. After pulling in clutch, please obtain the retained plate to block hand level of clutch to avoid pulling out clutch in working condition.

液压原理图
Hydraulic principle diagram



2.54-100-90-17.5-PL



型号 Model	第一层 The 1st layer		总排量 Total displacement (ml/r)	工作压力差 Working pressure diff.(MPa)	供油流量 Supply oil flow (L)	钢丝绳直径 Diameter of rope (mm)	层数 Layer	容量 Capacity of rope (m)	液压马达 Hydraulic motor	行星减速器 Gearbox model	重量 Weight (kg)
	拉力 Pull (KN)	绳速 Rope speed (m/min)									
ISYJ2.54-100-92-17.5-PL	100	0~7	7248	13.5	70	17.5	1	14.5	INM05-150D47	KC2.54 (i=48)	340
							2	31			
							3	49.5			
							4	70			
							5	92			

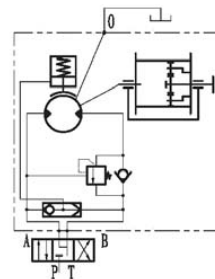
注意事项: 1、马达泄漏口O必须直接回液压油箱, 不允许连接至主回油路;

- 2、换向阀中位机能必须为“Y”型或“H”型;
- 3、液压绞车不允许载人;
- 4、绞车在受力情况下不可使用离合器;
- 5、离合器合上后必须将防脱出保护板挡住离合器手柄, 以防绞车在工作过程中, 离合器脱出, 发生危险。

- Note: 1. The drain port of the hydraulic motor must be separately connected to the hydraulic reservoir.
2. The directional control valve should be of a “Y” or “H” type in neutral position to assure the brake and activated.
 3. The winch is not designed for operation involving lifting or moving personnel.
 4. do not use clutch when a force exerts on drum of the winch.
 5. After pulling in clutch, please obtain the retained plate to block hand level of clutch to avoid pulling out clutch in working condition.

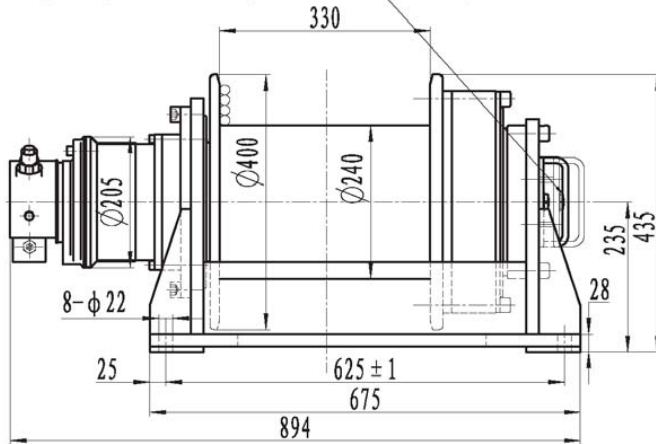
液压原理图

Hydraulic principle diagram

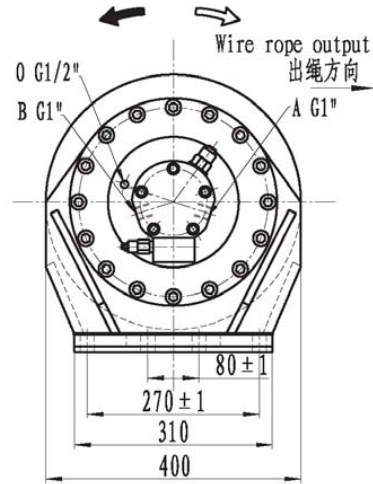


2.54-100-76-16-ZPL

将此手柄拉出，卷筒即可自由转动
After pulling hand level out, drum can rotate freely.



B口进油(提升) A口进油(下放)
Oil B→A Oil A→B



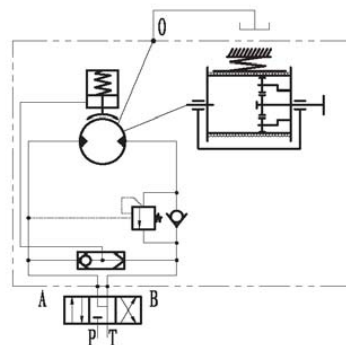
型号 Model	第一层 The 1st layer		总排量 Total displacement (ml/r)	工作压差 Working pressure diff.(MPa)	供油流量 oil flow supply (L)	钢丝绳 直径 Rope diameter (mm)	层数 Layer	容绳量 Wire rope Capacity (m)	液压马达 Hydraulic motor	行星减速器 Gearbox model	重量 Weight (kg)
	拉力 Pull (KN)	绳速 Rope speed (m/min)									
ISYJ2.54-100-73-16-ZPL	100	0~8.8	6192	17	75	16	1	16	INM05- 130D51	KC2.54(i=48)	300
							2	34			
							3	54			
							4	76			

- 注意事项: 1、马达泄漏口0必须直接回液压油箱，不允许连接至主回路；
2、换向阀中位机能必须为“Y”型或“H”型；
3、液压绞车不允许载人；
4、绞车在受力情况下不可使用离合器；
5、离合器合上后必须将防脱出保护板挡住离合器手柄，以防绞车在工作过程中，离合器脱出，发生危险。

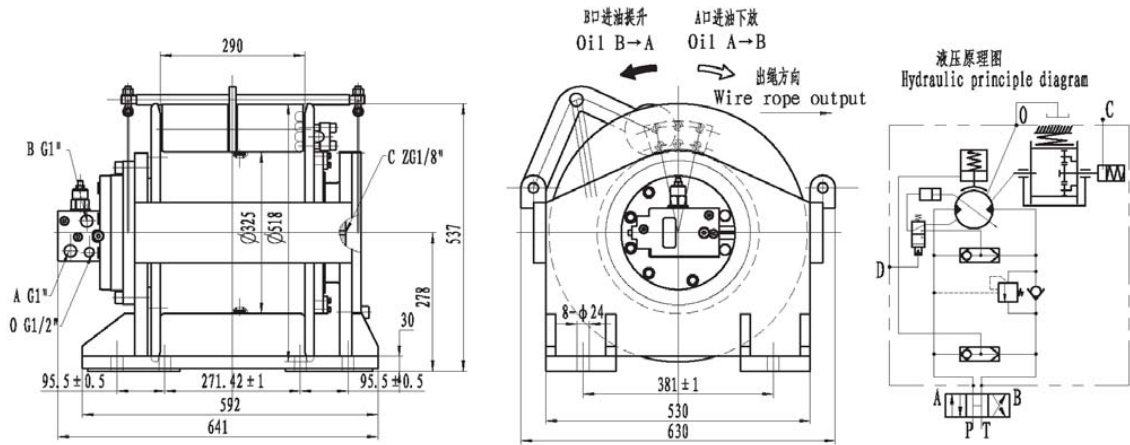
- Note: 1.The drain port of the hydraulic motor must be separately connected to the hydraulic reservoir.
2.The directional control valve should be of a “Y” or “H” type in neutral position to assure the brake and activated.
3.The winch is not designed for operation involving lifting or moving personnel.
4.do not use clutch when a force exerts on drum of the winch.
5.After pulling in clutch, please obtain the retained plate to block hand level of clutch to avoid pulling out clutch in working condition.

液压原理图

Hydraulic principle diagram



444-150/75-71-20-ZPL



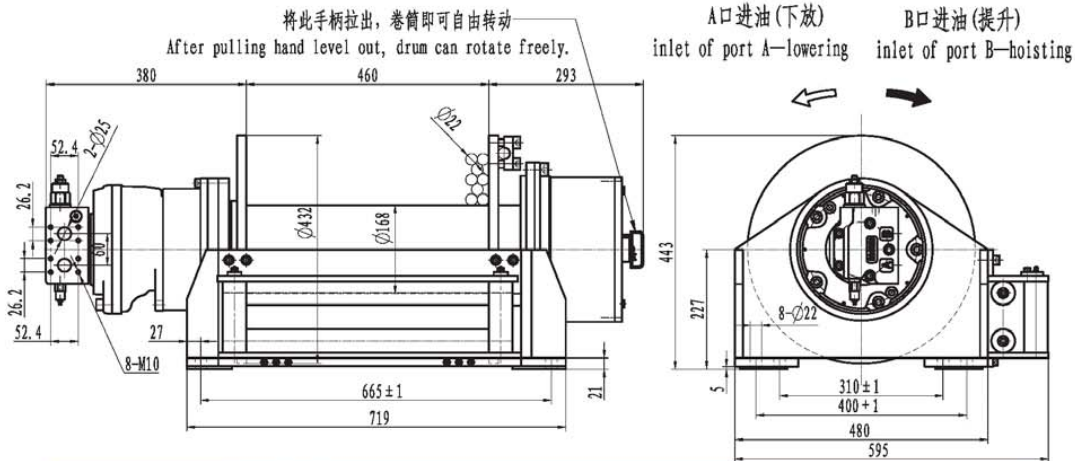
主要技术参数

Main Specification

型号	Model	ISYJ444-150/75-71-20-ZPL			
第一层拉力	Pull on the 1st layer (kN)	150	75		
第一层绳速	Speed on the 1st layer (m/min)	12.2	24.4		
总排量	Total displacement (ml/r)	9560	4780		
工作压差	Work pressure diff. (MPa)	21			
供油流量	Oil flow supply (L/min)	120			
钢丝绳直径	Rope diameter (mm)	20			
层数	layer	1	2	3	4
容绳量	Wire rope capacity (m)	15	32	50	71
液压马达型号	Hydraulic motor	IM86/43			
行星减速器型号	Gearbox model	IGC36 i=111.2			

- 注: 1. 液压绞车不允许载人。
 2. 液压绞车工作过程中不可以开启离合器。

Note: 1. The winch is not designed for operation involving lifting or moving personnel.
 2. The operation of switch off clutch must be carried out under stop of the winch. The operation of switch on clutch should be done without load on drum and put the latch of clutch in proper position when working.

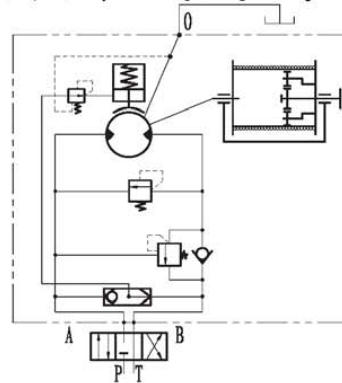


型号 Model	第一层 The 1st layer		总排量 Total displacement (ml/r)	工作压力 Working pressure diff.(MPa)	供油流量 Supply oil flow (L)	钢丝绳直径 Diameter of rope (mm)	层数 Layer	容量 Capacity of rope (m)	液压马达 Hydraulic motor	行星减速器 Gearbox model	重量 Weight (kg)
	拉力 Pull (KN)	绳速 Rope speed (m/min)									
ISYJ33-120-101-18-ZPL	120	10.1	7047	12	130	18	1	14	INM1-250 D240111P	C023 (i=29)	200
							2	32			
							3	52			
							4	75			
							5	101			
ISYJ33-132-94-20-ZPL	132	10.2	7047	13	130	20	1	13	INM1-250 D240111P	C023 (i=29)	200
							2	30			
							3	49			
							4	71			
							5	94			
ISYJ33-150-94-20-ZPL	150	8.6	8410	13	130	20	1	13	INM1-300 D240111P	C023 (i=29)	200
							2	30			
							3	49			
							4	71			
							5	94			
ISYJ33-175-88-22-ZPL	175	8	9106	13.5	130	22	1	12	INM1-320 D240111P	C023 (i=29)	200
							2	27			
							3	44			
							4	64			
							5	88			

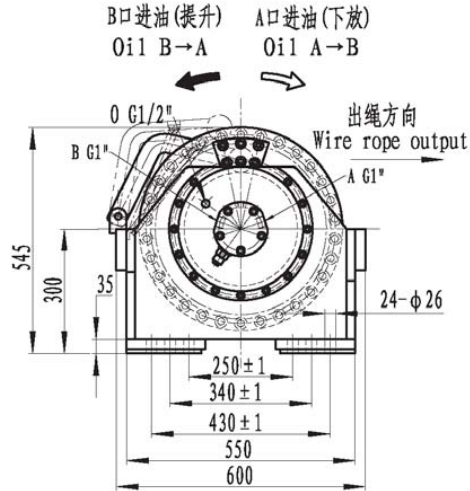
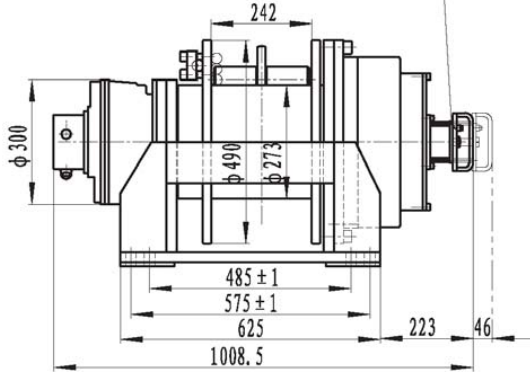
- 注意事项: 1、马达泄漏口O必须直接回液压油箱, 不允许连接至三回路;
2、换向阀中位机必须为“Y”型或“H”型;
3、液压绞车不允许载人;
4、绞车在受力情况下不可使用离合器;
5、离合器合上后必须将防脱出保护板挡住离合器手柄, 以防绞车在工作过程中, 离合器脱出, 发生危险。

- Note: 1. The drain port of the hydraulic motor must be separately connected to the hydraulic reservoir.
2. The directional control valve should be of a “Y” or “H” type in neutral position to assure the brake and activated.
3. The winch is not designed for operation involving lifting or moving personnel.
4. do not use clutch when a force exerts on drum of the winch.
5. After pulling in clutch, please obtain the retained plate to block hand level of clutch to avoid pulling out clutch in working condition.

液压原理图 Hydraulic principle diagram



将此手柄拉出，卷筒即可自由转动
After pulling hand level out, drum can rotate freely.



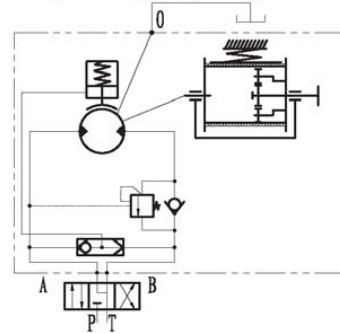
型号 Model	第一层 The 1st layer		总排量 Total displacement (ml/r)	工作压力差 Working pressure diff. (MPa)	供油流量 oil flow supply (L)	钢丝绳直径 Rope diameter (mm)	层数 Layer	容绳量 Wire rope Capacity (m)	液压马达 Hydraulic motor	行星减速器 Gearbox model	重量 Weight (kg)
	拉力 Pull (KN)	绳速 Rope speed (m/min)									
ISYJ45-150-35-22-ZPL	150	0~6	11173.4	15.2	80	22	1 10 2 21.5 3 35	INM2-350DS1	C45 (i=32.2)	450	
ISYJ45-200-32-24-ZPL	200	0~6	13685	16.6	98	24	1 9 2 20 3 32	INM2-420D240101	C45 (i=32.2)	450	
ISYJ45-250-29-26-ZPL	250	0~6	18193	15.5	124	26	1 8 2 18 3 29	INM2-600D240101	C45 (i=32.2)	450	
ISYJ45-300-28-28-ZPL	300	0~6	20060.6	16.9	135	28	1 8 2 17 3 28	INM2-630D240101	C45 (i=32.2)	450	

- 注意事项: 1、马达泄漏口O必须直接回液压油箱，不允许连接至主回油路；
2、换向阀中位机能必须为“Y”型或“H”型；
3、液压绞车不允许载人；
4、绞车在受力情况下不可使用离合器；
5、离合器合上后必须将防脱出保护板挡住离合器手柄，以防绞车在工作过程中，离合器脱出，发生危险。

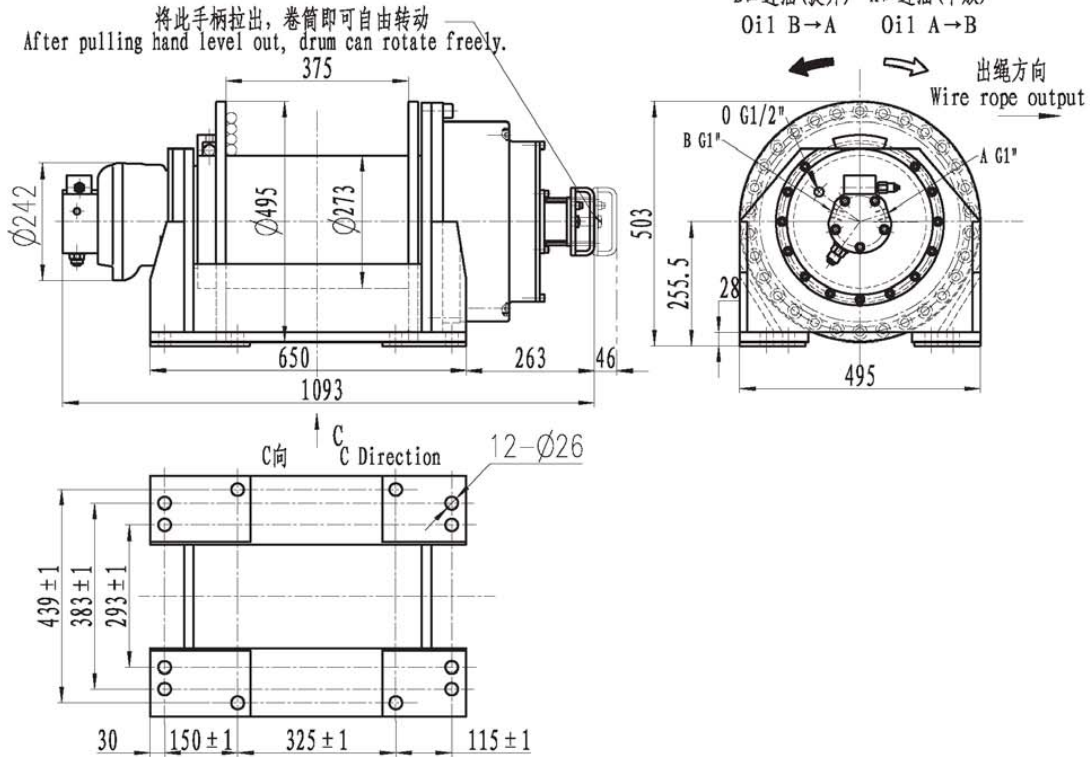
- Note: 1. The drain port of the hydraulic motor must be separately connected to the hydraulic reservoir.
2. The directional control valve should be of a “Y” or “H” type in neutral position to assure the brake and activated.
3. The winch is not designed for operation involving lifting or moving personnel.
4. do not use clutch when a force exerts on drum of the winch.
5. After pulling in clutch, please obtain the retained plate to block hand level of clutch to avoid pulling out clutch in working condition.

液压原理图

Hydraulic principle diagram



45-200-77-22-ZPL

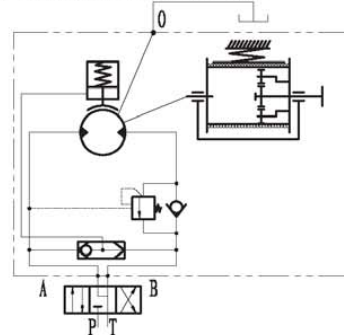


型号 Model	第一层 The 1st layer		总排量 Total displacement (ml/r)	工作压差 Working pressure diff.(MPa)	供油流量 oil flow supply (L)	钢丝绳直径 Rope diameter (mm)	层数 Layer	容绳量 Wire rope Capacity (m)	液压马达 Hydraulic motor	行星减速器 Gearbox model	重量 Weight (kg)
	拉力 Pull (KN)	绳速 Rope speed (m/min)									
ISYJ45-200-77-22-ZPL	200	0~6	10948	21	82	22	1	15	INM1-350DS1	C45 (i=32.2)	400
							2	33			
							3	54			
							4	77			

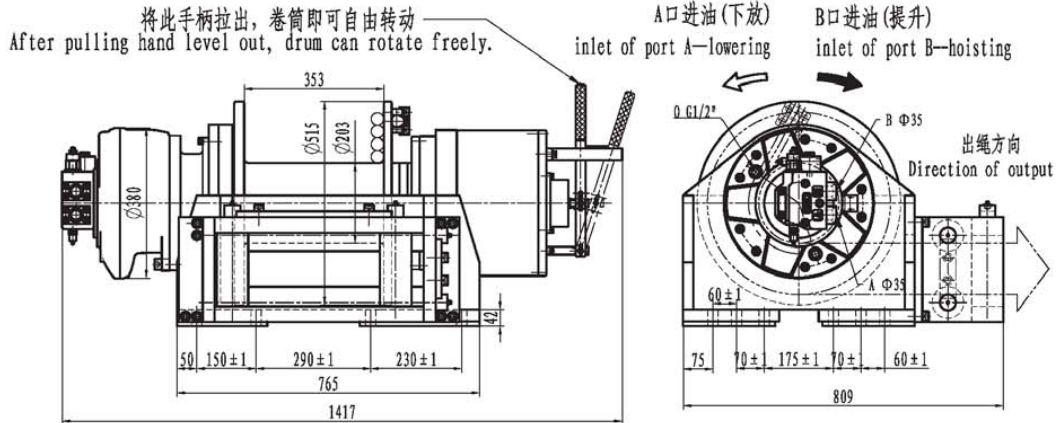
- 注意事项: 1、马达泄漏口O必须直接回液压油箱, 不允许连接至主回油路;
 2、换向阀中位机能必须为“Y”型或“H”型;
 3、液压绞车不允许载人;
 4、绞车在受力情况下不可使用离合器;
 5、离合器合上后必须将防脱出保护板挡住离合器手柄, 以防绞车在工作过程中, 离合器脱出, 发生危险。

- Note: 1. The drain port of the hydraulic motor must be separately connected to the hydraulic reservoir.
 2. The directional control valve should be of a “Y” or “H” type in neutral position to assure the brake and activated.
 3. The winch is not designed for operation involving lifting or moving personnel.
 4. do not use clutch when a force exerts on drum of the winch.
 5. After pulling in clutch, please obtain the retained plate to block hand level of clutch to avoid pulling out clutch in working condition.

液压原理图 Hydraulic principle diagram



4.54.5-350-44-32-ZPL

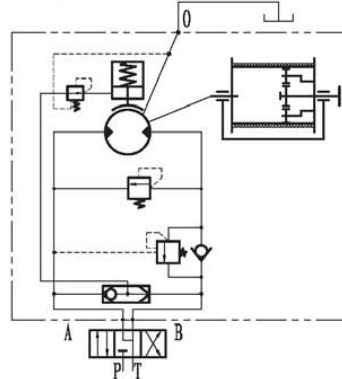


型号 Model	第一层 The 1st layer		总排量 Total displacement (ml/r)	工作压差 Working pressure diff.(MPa)	供油流量 Supply oil flow (L)	钢丝绳直径 Diameter of rope (mm)	层数 Layer	容量 Capacity of rope (m)	液压马达 Hydraulic motor	行星减速器 Gearbox model	重量 Weight (kg)
	拉力 Pull (KN)	绳速 Rope speed (m/min)									
ISYJ4.54.5-200-44-32-ZPL	200	9.4	14292.66	12.5	198	32	1	8	INM3-700 D240111P	C04.54.5 (i=20.71)	800
							2	18			
							3	31			
							4	44			
ISYJ4.54.5-250-44-32-ZPL	250	9.4	14292.66	15.5	198	32	1	8	INM3-700 D240111P	C04.54.5 (i=20.71)	800
							2	18			
							3	31			
							4	44			
ISYJ4.54.5-300-44-32-ZPL	300	7.6	18083.6	14.6	198	32	1	8	INM3-900 D240111P	C04.54.5 (i=20.71)	800
							2	18			
							3	31			
							4	44			
ISYJ4.54.5-350-44-32-ZPL	350	7.6	18083.6	17	198	32	1	8	INM3-900 D240111P	C04.54.5 (i=20.71)	800
							2	18			
							3	31			
							4	44			

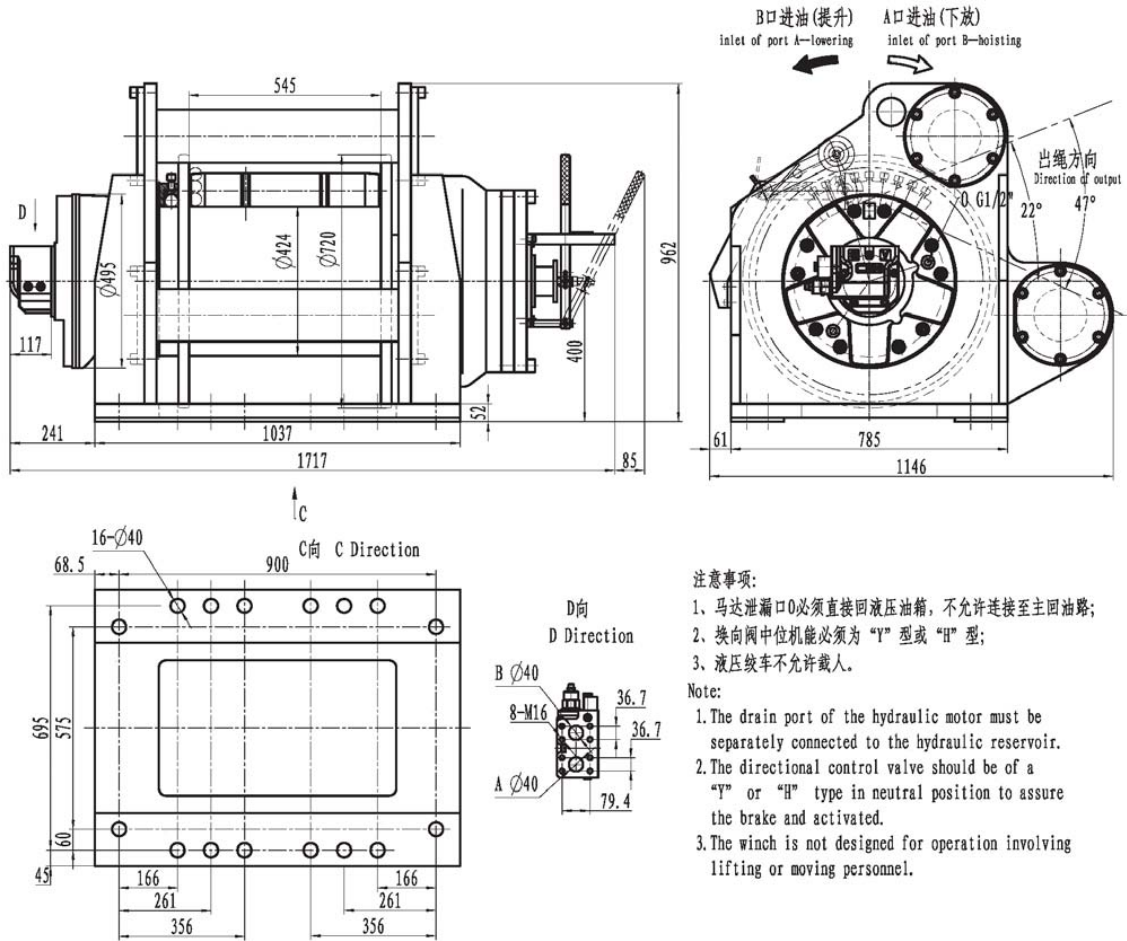
- 注意事项: 1、马达漏油口O必须直接回液压油箱, 不允许连接至主回油路;
 2、换向阀中位机能必须为“Y”型或“H”型;
 3、液压绞车不允许载人;
 4、绞车在受力情况下不可使用离合器;
 5、离合器合上后必须将防脱出保护板挡住离合器手柄, 以防绞车在工作过程中, 离合器脱出, 发生危险。

- Note: 1.The drain port of the hydraulic motor must be separately connected to the hydraulic reservoir.
 2.The directional control valve should be of a “Y” or “H” type in neutral position to assure the brake and activated.
 3.The winch is not designed for operation involving lifting or moving personnel.
 4.do not use clutch when a force exerts on drum of the winch.
 5.After pulling in clutch, please obtain the retained plate to block hand level of clutch to avoid pulling out clutch in working condition.

液压原理图 Hydraulic principle diagram



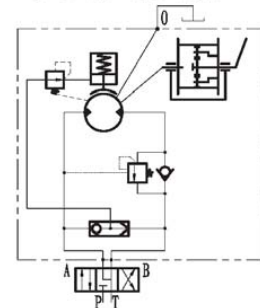
67-500-70-36-ZPL



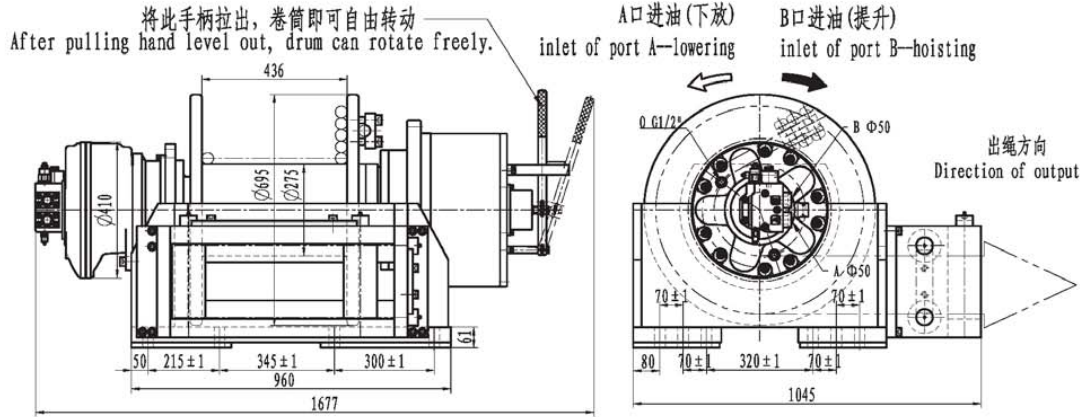
- 注意事项:
- 1、马达泄漏口O必须直接回液压油箱，不允许连接至主回路；
 - 2、换向阀中位机能必须为“Y”型或“H”型；
 - 3、液压绞车不允许载人。

- Note:
1. The drain port of the hydraulic motor must be separately connected to the hydraulic reservoir.
 2. The directional control valve should be of a “Y” or “H” type in neutral position to assure the brake and activated.
 3. The winch is not designed for operation involving lifting or moving personnel.

液压原理图
Hydraulic principle diagram



型号 Model	第一层 The 1st layer		总排量 Total displacement (ml/r)	工作压力 Working pressure diff. (MPa)	供油量 Supply oil flow (L)	钢丝绳直径 Diameter of rope (mm)	层数 Layer	容量 Capacity (m)	液压马达 Hydraulic motor	行星减速器 Gearbox model
	拉力 Pull (KN)	绳速 Rope speed (m/min)								
ISYJ67-400-70-33-ZPL	400	0-8	45752	16	283	33	3	70	INMS-1600D480101P	C67(i=28)
ISYJ67-500-70-36-ZPL	500	0-8	56196	15.5	330	36	3	70	INMS-2000D480101P	C67(i=28)



型号 Model	第一层 The 1st layer		总排量 Total displacement (ml/r)	工作压差 Working pressure diff. (MPa)	供油流量 Supply oil flow (L)	钢丝绳直径 Diameter of rope (mm)	层数 Layer	容量 Capacity of rope (m)	液压马达 Hydraulic motor	行星减速器 Gearbox model	重量 Weight (kg)
	拉力 Pull (KN)	绳速 Rope speed (m/min)									
ISYJ5.55.5-400-90-32-ZPL	400	6.2	32252.4	13.5	207	32	1	12	INM4-1100 D480111P	C05.55.5 (i=28.9)	950
							2	28			
							3	45			
							4	66			
							5	90			
ISYJ5.55.5-450-90-32-ZPL	450	5.2	38032.4	13	207	32	1	12	INM4-1300 D480111P	C05.55.5 (i=28.9)	950
							2	28			
							3	45			
							4	66			
							5	90			
ISYJ5.55.5-500-85-35-ZPL	500	5.2	38032.4	14.5	207	35	1	11	INM4-1300 D480111P	C05.55.5 (i=28.9)	950
							2	26			
							3	43			
							4	62			
							5	85			
ISYJ5.55.5-600-59-38-ZPL	600	5.2	38032.4	18	207	38	1	11	INM4-1300 D480111P	C05.55.5 (i=28.9)	950
							2	24			
							3	40			
							4	59			

- 注意事项: 1、马达泄漏口O必须直接回液压油箱, 不允许连接至主回路;
 2、换向阀中位机能必须为“Y”型或“H”型;
 3、液压绞车不允许载人;
 4、绞车在受力情况下不可使用离合器;
 5、离合器合上后必须将防脱出保护板挡住离合器手柄, 以防绞车在工作过程中, 离合器脱出, 发生危险。

- Note: 1. The drain port of the hydraulic motor must be separately connected to the hydraulic reservoir.
 2. The directional control valve should be of a “Y” or “H” type in neutral position to assure the brake and activated.
 3. The winch is not designed for operation involving lifting or moving personnel.
 4. do not use clutch when a force exerts on drum of the winch.
 5. After pulling in clutch, please obtain the retained plate to block hand level of clutch to avoid pulling out clutch in working condition.

液压原理图 Hydraulic principle diagram

