

Underway Profiler

Revelare Systems presents a reliable, autonomous underway profiling system, made with robust, easily available, off-the-shelf parts.

Built in response to demand for a field-serviceable and field-reparable product, this underway profiling system is made in Australia, consists of off-the-shelf industrial automation components, widely available connectors and cables and utilises an Australian made free-fall winch.

Revelare Systems' underway profiler can be fitted with sound velocity, turbidity, dissolved gas and other water column sensors. It can also be used to assist with seabed sampling as the powerful bundled winch can support a mini-Pederson or petite Ponar grab.

The controller operates autonomously to conduct underway profiling in depths up to 100 metres. Profiling can be triggered manually, or automatically using time, depth, speed and surface sound velocity data sourced via Ethernet link to industry standard acquisition software, including QINSy.

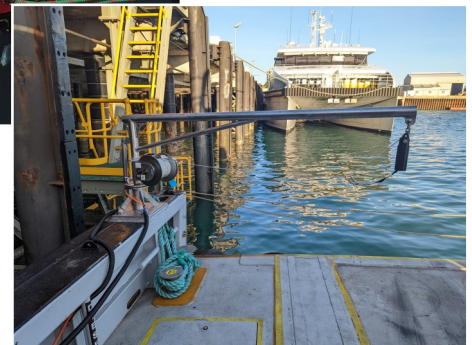
The system automatically computes cast trajectory and operates the winch to freewheel the sensor during the downcast and retrieve when it reaches a preset safety altitude above the seabed.

The system boasts a very low SWaP with only a 24V battery power supply and a small installation footprint. It can be used with an A-frame or a davit and has been installed with a custom deployment device in un-crewed surface vessels.

Revelare Systems can build custom davits and launch systems to suit any vessel size or type.

Contact us for more information:

systems@revelare.com.au



Controller weight	17kg
Winch weight (excl. davit)	25kg
Power	24VDC 3A idle 20-40A hauling 60A max with inbuilt breaker
Sensors	Designed for Valeport Swift (contact us for more options)
Control interface	Ethernet to acquisition system (QPS QINSy recommended)