



## Orpheo

### Custom software for Orphie cameras

All camera parameters configurable from a single software  
→ User friendly

Other additional features  
→ Digital zoom, snapshot, record...

### About the company

For 45 years, i2S has been the expert in high-quality image capture and processing, applied to most complex and challenging imaging projects in various fields, but also growing a unique know-how to become the leader in subsea imaging technology that became a dedicated business unit called Orphie.



Unmatched visibility distance, in real time,  
that saves you time and money.



Orphiecam 300

# Orphiecam 300

The best choice for your inspections



x3 visibility distance



Real time processing



Low Latency



Easy to use

## Technical specifications Orphiecam 300

### Electrical

Sensor	2/3" CMOS color sensor
Optical resolution	1080p
Frame rate	25 fps
Latency	~150ms
FOV	Air : 86°(D) / 75°(H) / 58°(V) Water : 62°(D) / 54°(H) / 40°(V)

### Optical & video

Input Voltage	12-32V
Power	13W maximum
Standard connector	Glenair G55 Aluminium MacArtney DBH8M (other on demand)
Data transmission	Ethernet 100BASE-T (100Mbit/s)
Bandwith	12Mbits/s maximum
Operating temperature	0°C to 45°C

### Mechanical

Depth rating	300m (984ft)
Housing material	Hard anodized Aluminium
Lens material	Tempered Borofloat
Dimensions (without connector)	L=254.5mm ; ø=90mm
Weight (air/water)	2.3kg/0.6kg



## Orphiecam 300 options

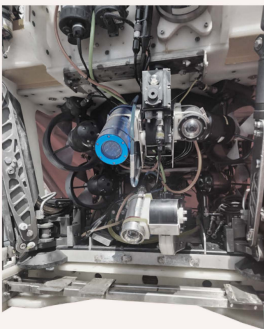
Super G55 1m straight tail (other lengths or right angle on demand)



MacArtney DIL8F tail (other lengths on demand)

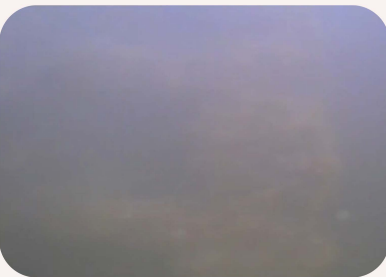
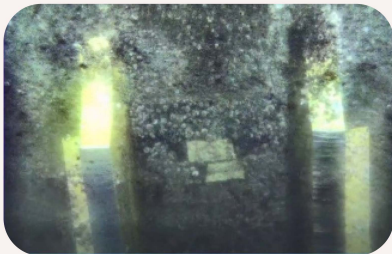


→ Other options and configurations on demand



Standard camera

Orphie camera



«I would definitely recommend the Orphie camera within my own team but definitely not to my competitors because the camera brings us quicker efficiency»  
ROV manager