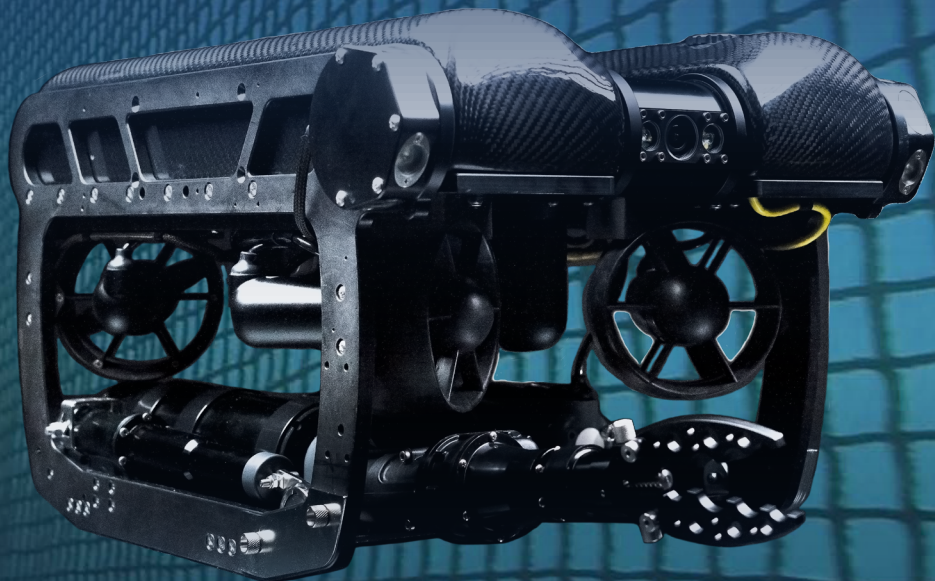


PIVOT

REMOTELY OPERATED VEHICLE

Striking the perfect balance between size and power. Equipped with 6 vectored thrusters and a flexible rotating tool platform, the PIVOT provides users with modularity, power, speed and control in a portable package.



To learn more visit
deeptrekker.com

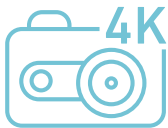


PIVOT

REMOTELY OPERATED VEHICLE



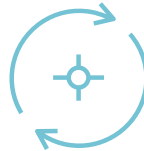
Six strong thrusters offer users stability, speed, and precise control. Ideally suited for offshore inspections, ocean science exploration, port and harbor defense, commercial diving, and more.



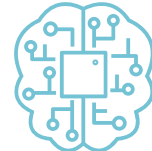
200 Degree 4K
Rotating Camera



Depth Rating to
305m (1000 ft)



Rotating Tool
Platform



Comprehensive
Sensor Integration

GENERAL SPECIFICATIONS

ROV General Specs

Width :	360 MM (14.2")
Height :	310 MM (12.2")
Length :	576 MM (22.7")
Weight (in air) :	17 KG (37 LB)
Body Material :	Anodized Machined Aluminum, Carbon Fiber, Stainless Steel, & Buoyancy Foam
Lens Cover Material :	Sapphire
Depth Rating :	305 M (1000 FT)
Operating Temp :	-10°C to 50°C (14°F – 122°F)
Case :	Custom Pelican Air 1650 & 1560
Drives/Thruster:	Magnetically Coupled/Sealed
Warranty :	1 Year – Parts and Labor (optional 2-3 yrs)

ROV Electrical System

System Voltage :	19.6 VDC
Thruster Control :	6x Independently Controlled Infinitely Variable 100% Reversible
Power Options:	Battery or Direct Power

